

- **Implement**
- **Grain Equipment**
- **Buildings**

LODERMEIER'S

Located in Goodhue, MN • 651-923-4441

2020 PROJECTS 2021 ISSUE

PUBLISHED SINCE 1971



lodermeiers.net



Donnelly Farms

Donnelly Farms of Farmington worked with the Lodermeier's Inc. sales staff and construction crews to install some nice upgrades to their grain site in 2020. They first installed a new MC D1200 mixed flow dryer with Pinnacle 20/20 touchscreen controls and Accudry moisture control system. The dryer was fed by a new Brock 3,500 BPH leg with galvanized construction. To take dry corn from the dryer they installed a new JPS 50hp 6" air system to fill their storage bins. To address their shortage of on-farm storage they also built a Brock 48' diameter bin with a capacity of 106,000 bushels. We believe their Irish eyes were smiling during the 2020 harvest.

Thanks for making 2020 another great year.



Jim Vermilya

Jim Vermilya of Eyota got tired of his roof augers so he contracted with Lodermeier’s Inc. to install a new JPS VairAir 5” grain conveying system to his bins. The air system has a VFD to control the speed of the grain moving through the piping. It also includes large lined cyclones, sight glasses, a bin distributor, and four bolt compression couplers.



Gerald and Ron Fox

Gerald and Ron Fox of Welch hired Lodermeier’s Inc. to do several projects on their grain setup this year. They first had the Lodermeier’s crew construct a new Brock 48’ diameter x 17-ring bin with a capacity of 73,877 bushels. The bin has a ShurStep stairway, Brock powersweep, low speed centrifugal fans, Brock Tri-Corr floor with Parthenon floor supports, and sidedraw with Shurstep stairs. They also got rid of all of the roof augers and installed a new JPS 5” x 40hp air system. Single phase power is easily converted with the VFD, and it also controls the speed of the motor. Large cyclones were installed on each bin to gently handle the grain.

Vari-Air

Vari-able Speed Grain Conveying Systems
Complete Systems—Controls—Accessories
Designed for Agricultural Applications

•Implement

•Grain Equipment

•Buildings

LODERMEIER'S

lodermeiers.net
Goodhue, MN
651-923-4441

VARI-AIR DESIGN—TRI LOBE

- Less than 1/2 the noise than a twin lobe
- Less than 1/2 the blower rpm than twin
- Less back pressure spikes for longer lifetime
- 3 lobes delivers more air than 2 lobes
- Steady air flow with 3 lobes
- PSI Control for precise load control
- Variable Frequency Drives for efficient operation
- Customization available on every system
- Installation Services
- Factory Trained Support Staff
- Innovative Accessories
- Complete Parts Availability
- UL/ETL Listed Control Panels
- 24/7 Support on all products
- 4" to 12" Blower Systems Available

MULE TRUSTED TRIED AND TRUE

Kawasaki
Let the good times roll*



MULE PRO-DXT™ DIESEL

MULE PRO-FXT™

MULE PRO-DXT™ DIESEL

MULE PRO-FXR™

MULE PRO-FX™

MULE PRO-MX™

MULE™ PRO LINE OF CAPABILITY AND STRENGTH

3- TO 6-PASSENGER TRANS CAB™

MULE PRO-DXT™ DIESEL
MULE PRO-FXT™

3-PASSENGER

MULE PRO-DXT™ DIESEL
MULE PRO-FXR™
MULE PRO-FX™

2-PASSENGER

MULE PRO-MX™



*Assembled in the U.S.A. badge does not apply to the MULE PRO-MX™ models.

KAWASAKI CARES: Read Owner's Manual and all on-product warnings. Always wear protective gear appropriate for the use of this vehicle. Never operate under the influence of drugs or alcohol. Protect the environment. The Kawasaki MULE™ side x side is an off-highway vehicle only, and is not designed, equipped or manufactured for use on public streets, roads or highways. Obey the laws and regulations that control the use of your vehicle. ©2019 Kawasaki Motors Corp., U.S.A.

Scan with camera
to view videos,
key features
and more.





Joe and Bill Fiesler

Joe and Bill Fiesler of Eyota hired Lodermeier’s professional crew to install a new JPS VariAir 5” grain conveying system to their bins. They only have single phase power but that is no problem with a VFD that converts the power from single phase to three phase and also controls the speed of the blower motor. The air system also includes large lined cyclones, a bin distributor, sight glasses, and four bolt compression couplers.



VERSATILE

versatile-ag.com

Versatile has been producing rugged and reliable Front Wheel Assist tractors since 1993. Available from 275 - 365 hp, the new line of Versatile MFWD tractors are designed to maximize efficiency on your farm. Experience the perfect combination of power, economy and performance with a reliable Cummins QSL9 engine and smooth-shifting 16x9 powershift transmission. Limit confusion and stay focused on the task at hand with intuitive controls that are easy to learn.


SIMPLY RUGGED
SIMPLY VERSATILE



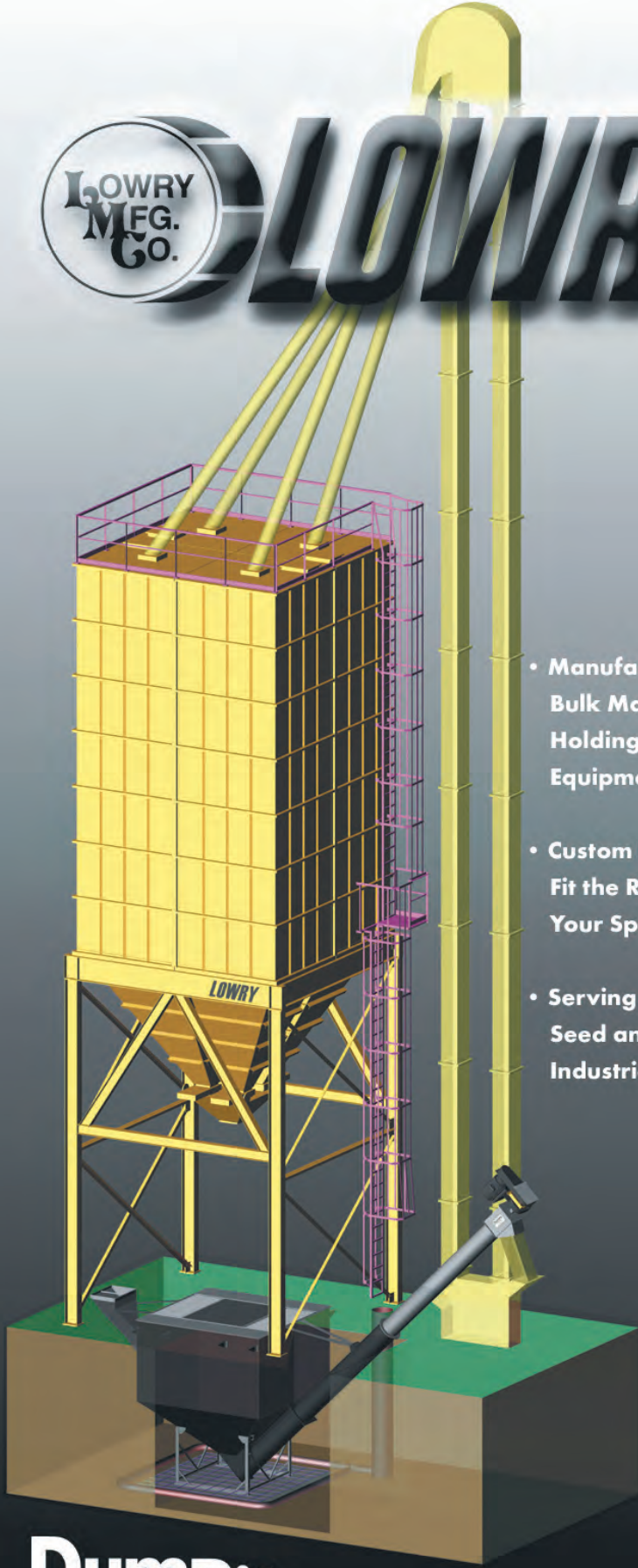


Mahle Farms

Bruce and Beth Mahle of Plum City, Wisconsin hired Lodermeier's Inc. to do a major upgrade of their drying setup. After much planning they decided to install a new dryer, air system, leg, tower, and dumpit. The dryer they chose is the new MC Delta D600H mixed flow dryer. The dryer features low speed centrifugal fans, high efficiency burners, dual Pinnacle 20/20 touchscreen controls, and AccuDry moisture control system. The dryer can be remotely monitored and ran with the MC Trax monitor system. A new JPS VariAir 5" grain conveying system was installed. A VFD converts the single phase to three phase and also controls the speed of the blower to maintain the exact pressure needed. A new LeMar tower holds a 5,000 bph Sudenga leg. Bruce purchased a used Lowry dumpit a few years ago from Lodermeier's and that was installed and a new Sudenga conveyor takes the corn from the dumpit auger to the leg.



LOWRY



- Manufacturer of Quality Bulk Material, Receiving, Holding, and Dispatching Equipment
- Custom Engineered to Fit the Requirements of Your Specific Facility
- Serving the Grain, Feed, Seed and Plastics Industries Since 1972

DumpIt

317 Cherry Street, Box 121 • Lowry, MN 56349 • (320)283-5450 or (800) 950-4792



Mark Vieths

Mark Vieths of Goodhue had been dreaming of ways to streamline his grain receiving process for a couple of years. After careful consideration he decided to install a new receiving conveyor and grain leg to unload his incoming semis with. The setup includes a Brock 8,000 BPH receiving conveyor and an 8,000 BPH Brock leg supported by a Lemar structural support tower. Mark also installed a new Brock 42' diameter x 48' eave bin with a capacity of 58,600 bushels. A few features on the bin were a 15hp centrifugal fan, 10" powersweep unload with vertical powerhead, Brock Shur-Step stairway, and a 5th ring side draw system.

StirAtors

The Design III StirAtor can turn a grain bin into a drying system at a minimum investment. A high temperature, above 10 degree rise, bin dryer has to have a way to dry all the grain to the same moisture. Just running a fan and heater on a bin full of grain will result in 5% grain at the bottom with no moisture removed on the top. A GSI StirAtor ensures that all the grain is the same moisture without requiring a wet tank.



•Implement
•Grain Equipment
•Buildings
LODERMEIER'S

lodermeiers.net
Goodhue, MN
651-923-4441

STIRATOR FEATURES:

Rugged Drive: A strong 3/16" aircraft cable drives the machine. No reversing switches.

Disconnect Box: Fused disconnect box protects motors.

Automatic Shut-Off: Shuts the StirAtor down if the trolley binds.

Fused Gear Motor: Protects against electrical problems.

Sealed Bearings: Low maintenance.

Solid State Electronic Tilt Switch: Replaces the mercury switch. Controls the forward motion of the machine. No moving parts.

Gear Motor Ratio: GSI StirAtors use a 9 RPM gear motor.

LIGHT IN WEIGHT. HEAVY IN RETURNS.



If you want a return on your investment, you want Gleaner®. The combine's simple and lightweight build keeps compaction to a minimum while maximizing fuel efficiency. Plus, fewer parts means less maintenance — and more time running at peak performance.

GLEANER®

**LEARN MORE AT
GLEANERCOMBINES.COM**

© 2020 AGCO Corporation. Gleaner is a brand of AGCO Corporation. AGCO® and Gleaner® are registered trademarks of AGCO. GL20N001CM



Hines Ranch

Dale and Dean Hines of Ellsworth, Wisconsin worked with Lodermeier’s Inc. to install a new MC E500 Eco Series dryer. The dryer included a quiet 25hp centrifugal fan and burner with a VFD to convert 1ph power to 3ph. Also included with the dryer were aluminum screens, Pinnacle 20/20 dual touchscreen controls, Accu-Dry moisture control technology, and top notch customer support from the Lodermeier’s service staff.



The REM GrainVac VRX & VR12 are available with a wide assortment of accessories to make your job faster, easier and now cleaner with the REM Dust Collector. The Dust Collector keeps you and your farm yard clear of dust and debris. Contact your REM dealer for more information.

VRX Features:

- 49' standard hose length
- Up to 6,000 bph
- 85 HP requirement

VR12 Features:

- 52' standard hose length
- Up to 10,000 bph
- 130 HP requirement



lodermeiers.net
Goodhue, MN
651-923-4441



877.667.7421 | grainvac.com



Kenny and Brandon Lexvold

The Lexvold’s from Goodhue wanted to add a larger wet bin to their farm drying setup. They decided on a Brock 27’ diameter x 37’ eave outside stiffened bin with a capacity of 18,600 bushels. The bin included a 3’ tall concrete foundation, Shur-Step stairway and 8” powersweep unload.

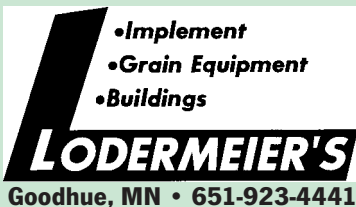


**Tuff Face Insulation:
Superior Condensation Blanket**

Our Tuff Face Insulation Blanket is a wide-width condensation blanket consisting of a white, smooth, cross laminated wall insulation blanket, designed specifically for agricultural constructin in new or retrofit applications. Often, it is referred to as ‘peck proof’ because of its bird resistant qualities.

**Your Local
Dealer:**

AMD Distribution
1021 Kasten Drive
Spring Valley, MN



•Implement
•Grain Equipment
•Buildings

Goodhue, MN • 651-923-4441

Gary Samuelson

Gary Samuelson of Cannon Falls started expanding on a new site last year with a new Brock bin. This year, Gary found a used dryer to move to the new location and hired Lodermeier's to build a new Brock 27'x40' bin for wet storage. The bin has full floor aeration, quiet low speed centrifugal fan, and Brock 8" powersweep. Gary had us move his old air system to the new location and installed a new JPS VariAir grain conveying system in his old site.



More precision in your field.
More crop in your yield.

WHITE
PLANTERS
Precision Planting

When it comes to planting, accuracy is everything. That's why more and more growers are choosing White Planters® — now delivering the unrivaled accuracy that can only come from world-renowned Precision Planting® technology. Right now, you can see the White Planters 9800VE Series, featuring Precision Planting vSet™ and vDrive™ meters to ensure one seed per space, with seed spacing consistent across the entire width of the planter in all ground conditions. Plant with precision with White Planters. white-planters.com/planting

GET THE BEST DEAL ON WHITE PLANTERS:

- Implement
- Grain Equipment
- Buildings

LODERMEIER'S

lodermeiers.net
Goodhue, MN • 651-923-4441

© 2018 AGCO Corporation. White Planters is a brand of AGCO Corporation. AGCO® and White Planters® are trademarks of AGCO. Precision Planting® is a trademark of Precision Planting LLC. All rights reserved. WP18TK001CRv03



Peterson Farms

Peterson Farms of River Falls, Wisconsin wanted to update their existing air system so they contacted Lodermeier's and decided to install a 5" JPS grain transfer system to feed three bins with a 30 hp motor on the blower controlled with a VFD. The system also has a magnum systems air lock, bin wall distributor, sight glass, large cyclones, and all outdoor controls.



**A Brock
dealer
wears a
badge
of honor.**

**Solid grain storage
starts with genuine
integrity.**

Brock dealers earn your trust by standing behind every part of the grain systems they sell. So you know who to call if you ever need support. This kind of confidence in your grain storage and your dealer is easy to recognize. Just look for the Brock name. Contact us today.



— BROCK SOLID —
Authorized Independent Dealer

Storage | Handling | Conditioning | Structures



Move Grain Better

The MKX Series features over 75 proven performance enhancements including advanced ease-of-use, serviceability and maximum capacity while providing you with everything you've come to expect from your favorite auger.

For more information, visit aggrowth.com/westfield

- Implement
- Grain Equipment
- Buildings

LODERMEIER'S

aggrowth.com

lodermeiers.net
Goodhue, MN
651-923-4441





Bianchi Farms

Joe and Tom Bianchi of Elgin contacted Lodermeier's Inc. again when it was time to upgrade their drying system. They wanted to add more wet storage so they constructed a new Brock 27' diameter x 17 ring bin with a capacity of 22,465 bushels. The bin is anchored on top of a stemwall foundation so the the new Brock powersweep can feed directly into the Sudenga wet leg boot. The bin also features a quiet low speed centrifugal fan.

Reed Clemenson

Reed Clemenson of Pine Island had Lodermeier's Inc. construct a new Brock 24' diameter x 12-ring bin with a capacity of 12,572 bushels. The bin has a Brock Tri-Corr floor, Brock 8" powersweep, and low speed centrifugal fan. Reed also purchased a used GSI dryer from Lodermeier's that they installed.



Solid.

Support as strong as our steel.

Smart recommendations. Reliable service. Trusted relationships. It's what being a Brock dealer is all about. Doing whatever it takes to protect your crop and keep your farming operation working without problems. Because when we stand together, nothing can stand in our way.

BROCK SOLID® means we've got your back. Contact us today.



— BROCK SOLID® —

Authorized Independent Dealer

Storage | Handling | Conditioning | Structures



Elm Lane Farms

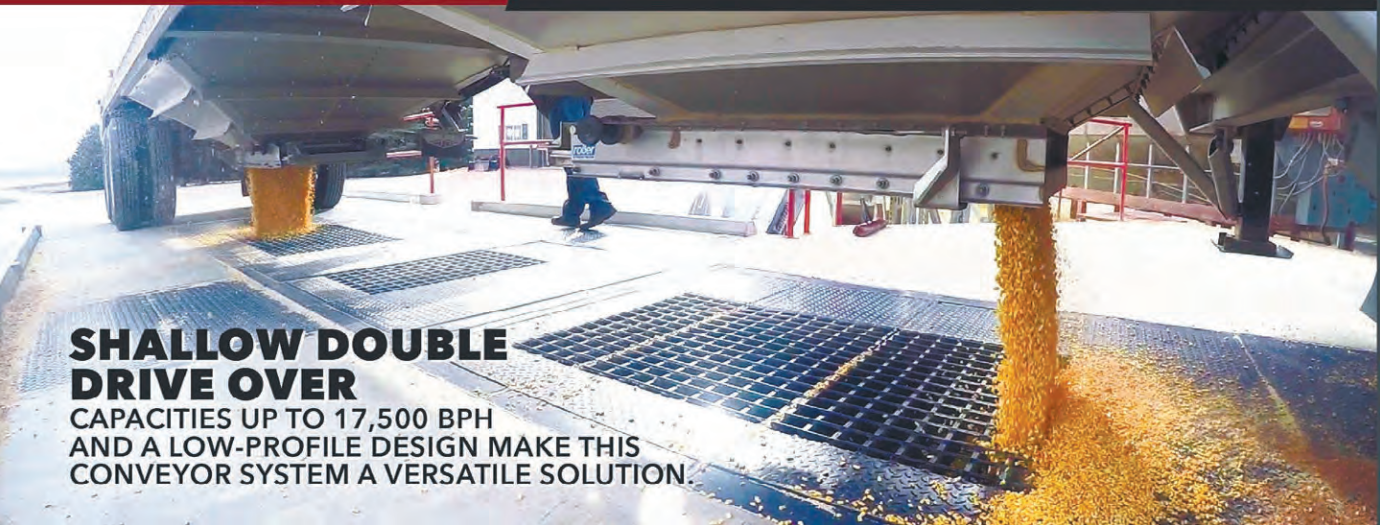
Charlie and Chris Weber of Elmwood, Wisconsin wanted to add a continuous flow dryer to their setup. They went with an MC E400 Eco series dryer. The dryer included a quiet 20hp centrifugal fan and burner, Accudry moisture control system, MC-Trax remote monitoring system, and 3' support stands. They also had Lodermeier's install a new JPS 30hp air system to take corn away from the dryer to their storage bin.



**BUCKET ELEVATORS AND
CHAIN CONVEYORS.**
BUILT FOR YOU. DESIGNED TO LAST.
THE DIFFERENCE IS IN THE DETAILS.

**GRAIN HANDLING
SOLUTIONS**

CONTACT LODERMEIER'S INC FOR ALL YOUR GRAIN HANDLING NEEDS, BIG OR SMALL.



**SHALLOW DOUBLE
DRIVE OVER**
CAPACITIES UP TO 17,500 BPH
AND A LOW-PROFILE DESIGN MAKE THIS
CONVEYOR SYSTEM A VERSATILE SOLUTION.

Sudenga
INDUSTRIES, INC.
WWW.SUDENGA.COM



LODERMEIER'S INC.
651-923-4441
38241 COUNTY 6 BLVD
GOODHUE, MN 55027


WWW.LODERMEIERS.NET

AN AUTHORIZED SUDENGA DEALER



Sorg Farms Partnership

The Sorgs of Hastings wanted to upgrade their drying setup so they contracted with Lodermeier's Inc. to install the new equipment. A new MC 12-20-100 continuous flow tower dryer was installed to speed up the drying. This dryer has stainless steel screens, multiple catwalks, Dual Pinnacle 20/20 touchscreen controls, and the AccuDry moisture control system. A new Brock 27'x21-ring bin was constructed to hold 27,603 bushels of wet storage. The bin has a Brock Tri-Corr floor with Parthenon floor supports, 8" powersweep, and low speed centrifugal fan. A new Brock Tri-Corr floor was also installed in a bin on the same location for better aeration.



GRAIN DRYER SPECIALISTS
MathewsCompany.com

Mathews Company

MODULAR TOWER SERIES

MAX EFFICIENCY

HIGH CAPACITY

BUILT TO LAST





Pinnacle 20/20

CONTROL SYSTEM







McNamara Family Farms

Steve, Carolyn and Nicole Koziolk of Northfield were looking to do a once in a generation upgrade to their grain facility in Goodhue. They worked with the Lodermeier's Inc. sales team going through many design options and ideas before they reached a suitable plan and contracted with Lodermeier's to do the installation. The project included a complete concrete basement-style pit with 1,000 bushel dump pit by Agristeele to unload semis quickly. They installed a Brock receiving leg and a dry leg with capacities of 5,500 and 3,500 BPH which were both supported by a Lemar structural support tower. Also installed was a Brock 21,500 bushel wet bin, Brock 52,000 bushel storage bin, and multiple Brock drag chain conveyors for receiving grain and reclaiming bin unloads. The site was also designed and built with future expansion in mind to fulfill their needs for years to come.



**Hold
strong
with
Brock
grain
storage.**

Keep your harvests protected and secure. Brock grain storage bins are known for reliability and quality. Better yet, you get the knowledge and experience from your local Brock dealer at your side every step of the way. Get dependable, secure storage season after season with Brock.

Store strong with BROCK.

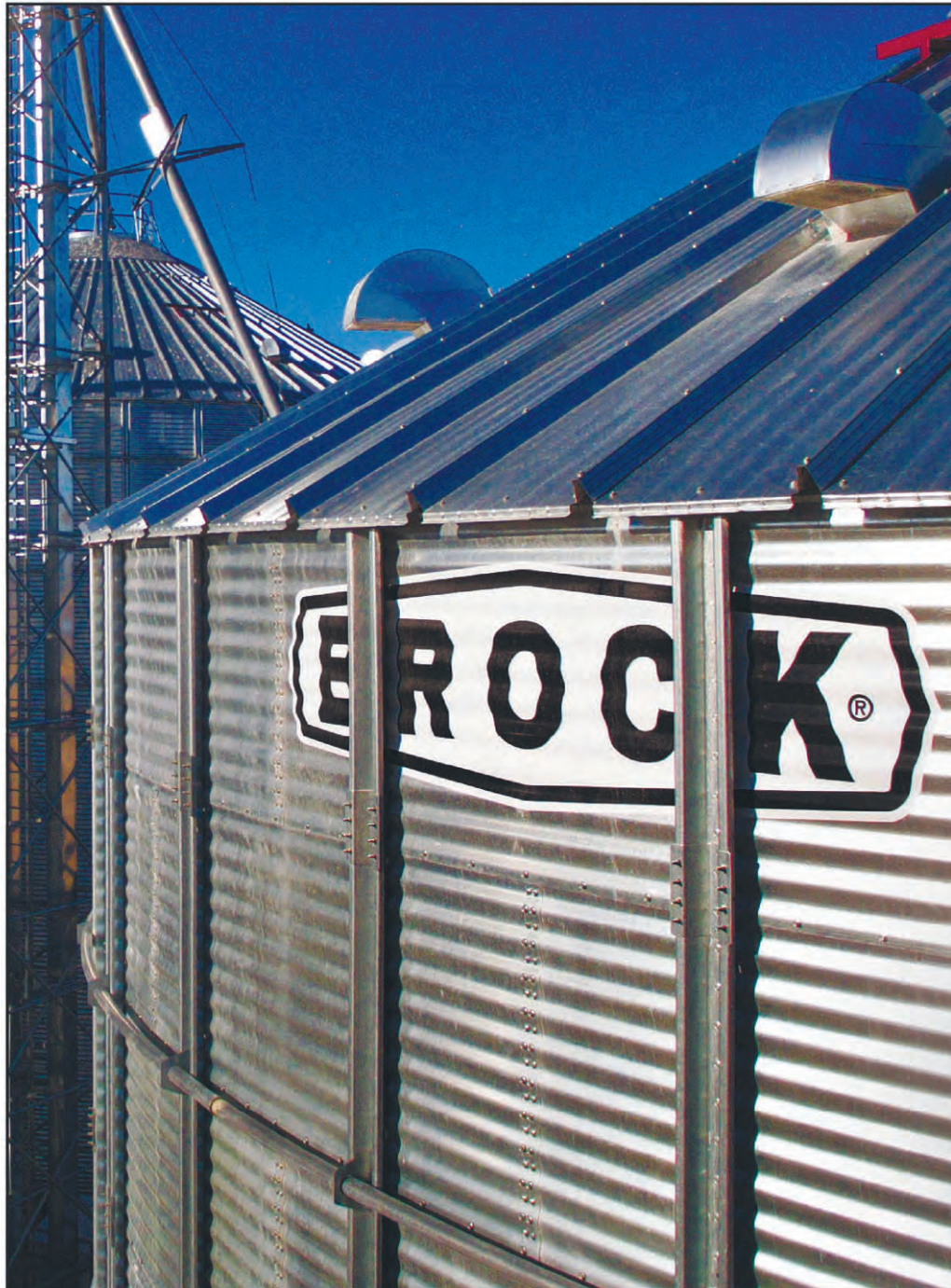


— BROCK SOLID® —
Authorized Independent Dealer



Jeff VonHoltum

Jeff VonHoltum of Plum City, Wisconsin hired Lodermeier's Inc. to do a major upgrade to his drying setup. Jeff purchased a new MC D900H mixed flow grain dryer. The dryer has a Pinnacle 20/20 dual touchscreen controller with MC Trax remote access. The moisture can be controlled with the MC TruDry system or the MC AccuDry system. It features very quiet, low speed centrifugal fans. Lodermeier's crew then built a Brock 24'x15-ring bin with a capacity of 15,616 bushels. The bin is built on a 4' stemwall foundation so the Brock powersweep can dump directly into the leg. It has full floor aeration and a low speed centrifugal fan. An HGS975 bushel dumpit was installed. It has a 5,000 bph auger and full length grate. The leg is carried from the dumpit into the wet bin and the MC mixed flow dryer through a new Brock 5,000 bph leg and LeMar galvanized support tower.



Solid.

Don't trust your grain to anything less.

When it's time for harvest, you have days, not weeks, to get your grain out of the field and safely stored. That's why Brock grain systems are built to deliver day-to-day reliability and long-lasting durability to protect your crop and your livelihood. BROCK SOLID® means your grain storage, handling, conditioning and structures will stand up to the challenge.

Contact us today.



—BROCK SOLID®—

Authorized Independent Dealer

Storage | Handling | Conditioning | Structures



Ag Partners

The management team at Ag Partners contacted Lodermeier’s, Inc. in early 2019 wanting to build a new shop in Goodhue for maintaining all their equipment and vehicles. After a lot of discussion and planning, a contract was signed and construction began on this 18,000 sq. ft. Butler Mfg. pre-engineered steel frame building. This building is divided into three main areas, including a 100’x120’x24’-6” main shop area, and 75’x 50’x24’-6” shop area for their propane division. This area also has a mezzanine for parts and tool storage, an area with computers for parts ordering and shop manuals, restrooms, and an employee breakroom. The third and final area is a 75’x30’x24’-6” space used as a “wash bay” for their trucks and equipment. This shop has seven overhead doors, sixteen windows that allow for great amounts of natural light, several floor drains, and a large concrete apron on the exterior for working on equipment. To complete the project, a sprinkler system and fire alarm was installed to meet building codes.



LESS CAN'T. **MORE CAN.**

Do all you need to do and more with Massey Ferguson® compact and utility tractors. Big on versatility, compact in design, these hardworking tractors open all new possibilities for getting things done.

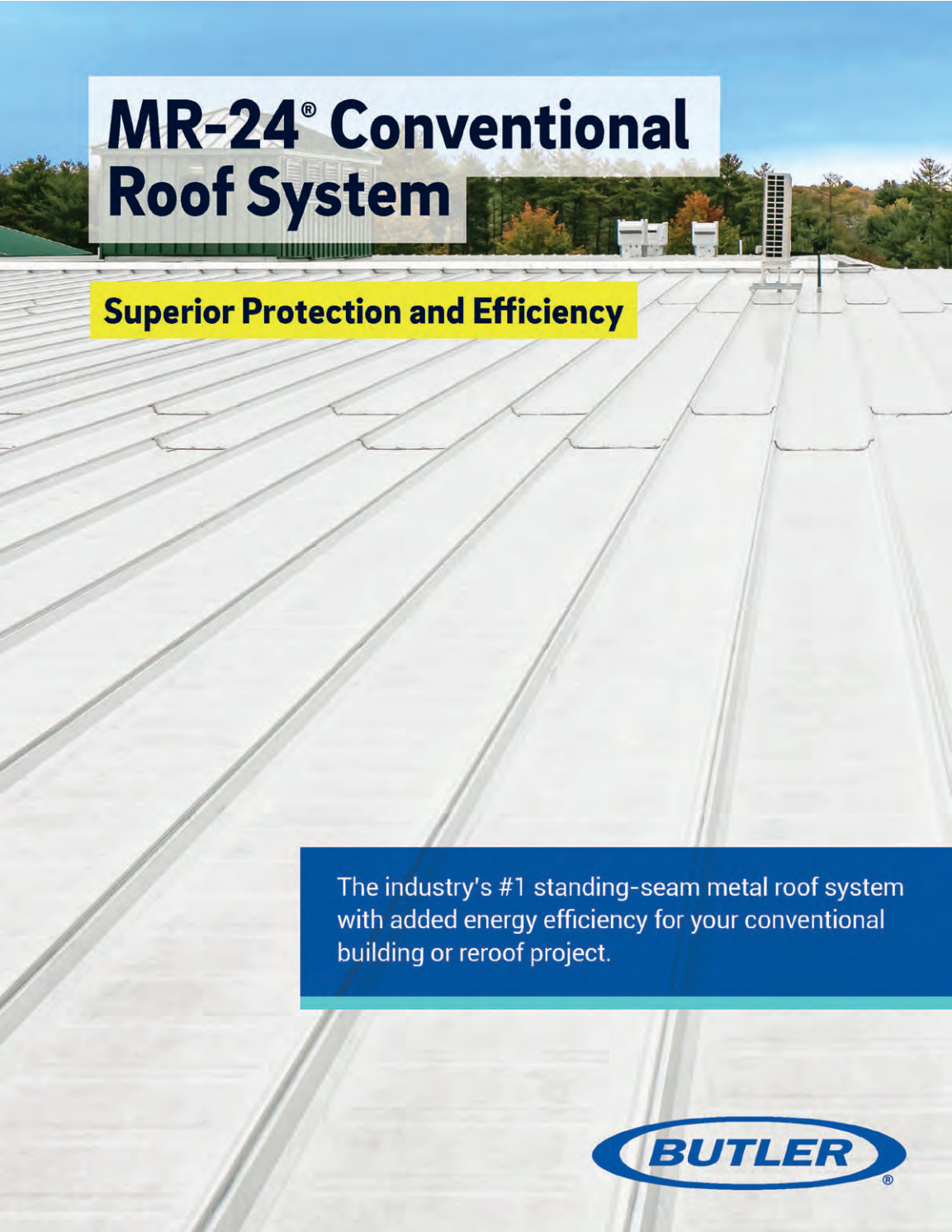
www.masseyferguson.us

VISIT US TODAY. WE’LL HELP
YOU FIND THE RIGHT MODEL
FOR YOUR OPERATION.



lodermeiers.net
Goodhue, MN
651-923-4441

 AGCO ©2018 AGCO Corporation. Massey Ferguson is a worldwide brand of AGCO Corporation. AGCO and Massey Ferguson are trademarks of AGCO. All rights reserved. MF18T1003CH



**MR-24® Conventional
Roof System**

Superior Protection and Efficiency

The industry's #1 standing-seam metal roof system
with added energy efficiency for your conventional
building or reroof project.





Alan and Adam Dicke

The Dicke brothers purchased this 72'x121'-4"x 24' eave height pre-engineered Butler Mfg. steel building from Lodermeier's Inc. in 2020. This building was erected by the Dicks over a manure pit with a slatted floor. This building has 2" condensation control roof insulation and two 15'x14' framed openings for overhead doors. The building also has a mono-sloped roof, is all open to the south, and has curtains on the north sidewall. The Dicke farm is near Goodhue.



Northwoods Orchard

The Eckdahl family, owners of Northwoods Orchard in Oronoco worked with Lodermeier's Inc. to build this 40'x40'x12' post frame building with a 10'x40' lean-to in 2020. This building features charcoal and burgundy Classic Rib steel panels for the siding and roofing. 2' vented eave and gable overhangs along with a continuous vented ridge, help with building ventilation. Lodermeier's crew installed a ceiling under the porch area to keep birds out and there are 6x6 solid sawn brown treated posts supporting the porch roof. A floor drain was installed and then a 5" thick concrete floor was poured inside the building. 3" of closed cell foam insulation was then sprayed in the walls. The Lodermeier's crew installed a "bright white" steel ceiling, and then 14" of blown fiberglass insulation was placed in the attic. The interior walls were finished off with 1/2" thick x 24" wide smooth white PVC panels from Extrutech Plastics.



Warren Springer

Warren Springer contacted Lodermeier’s, Inc. in late 2019 wanting to build a new storage building on his Kenyon area farm in 2020. After some discussion and planning Warren contracted with Lodermeier’s Inc. to build this 40’x64’x14’ post frame building with a 14’x64’ open lean-to. The lean-to is used for trailers and other storage while the inside is used for equipment and vehicle storage. Warren had Lodermeier’s crew build a small 16’ x 40’ insulated workshop in one corner of the building. Warren wanted a “gambrel-style roof so the folks at Littfin Truss Company worked their magic once again and designed a set of roof trusses to meet Warren’s wishes. 29 gauge Pro Panel II patriot red and bright white steel panels and trims were used for the exterior. A 10’x10’ and two 14’x12’ Clopay overhead doors were used for gaining access to the building.



Dan Bertschinger

Dan Bertschinger purchased this 46’x 64’x14’ post frame storage building this past year and had the Lodermeier’s crew erect it on his Pine Island area property. Some of the great features Dan included on his new building are the 2’ vented eave and gable overhangs, three insulated overhead doors with operators and radio controls, a 5” thick concrete floor in the entire building, a steel ceiling in the entire building, and a 22’x36’x14’ area that is completely insulated with a steel liner that is used for Dan’s workshop area. Seamless steel gutters were installed on both eaves, and color steel panels from Metal Sales Mfg. were chosen for the exterior walls and roof.



Fabricators of Wood Floor and Roof Trusses
Laminated Columns and Structural Steel
Distributors of i-Level
Engineered Wood



•Implement
•Grain Equipment
•Buildings
Sales by: **LODERMEIER'S**
lodermeiers.net • Goodhue, MN • 651-923-4441



Stephen Bourbeau

Stephen Bourbeau purchased the materials package from Lodermeier's, Inc in 2020 for this 32'x42'x14' post frame storage building and erected it himself on his Red Wing area property. A few features included on this project were the four 4'x3' #900 insulated vinyl slider windows, an 18'x12' overhead door and 29 gauge color steel panels from Metal Sales for the roofing and siding.



Josh and Lindsay Finnesgard

Josh and Lindsay contracted with Lodermeier's Inc. once again this past year to erect this 40'x56'x16' addition on the south end of their existing shop. This addition has Classic Rib steel panels from Metal Sales Mfg. on the exterior to match their existing building. A 16'x16' Clopay brand insulated overhead door with operator was installed on the west side of the addition. A full insulation and steel liner package was also installed on the interior to complete the project.



Harold Puppe

After moving back to the Red Wing area in 2020, Harold Puppe contacted Lodermeier's Inc. for a building to store his camper and some other items. After some discussion and planning the Puppes decided have the Lodermeier's crew erect this 24'x40'x16' post frame type building. The roof and gables were sheathed with 29 gauge color steel panels from Metal Sales Mfg. Both sidewalls were left uncovered, and both end walls were left open so Harold could drive through the building.



Top It Off
With Excellence!

Consider the advantages of metal roofing:

- Easy exposed fastened installation, open frame or solid deck
- Durable, weather-resistant, and virtually maintenance free
- A variety of colors, with matching trims and accessories
- Industry-leading 45-year paint warranty
- Heaviest galvanization in the industry
- Tested for wind, fire, and uplift

ms metal sales
manufacturing corporation

800.406.7387 • www.metalsales.us.com

QUALITY METAL ROOFING AND SIDING MATERIAL



Al Jarratt

Al Jarratt was in need of more storage on his Cannon Falls area property. After contacting Lodermeier’s Inc. and meeting with the sales staff Al chose to have them build this 26’x40’x14’ post frame type building. This building has a 13’x14’ one piece sliding door on each gable end, a 3/0 x 6/8 A.J. Mfg. brand steel entry door with keyed lockset, and clear polycarbonate “ridge lite” cap on the peak. Al chose light stone Pro Panel II color steel panels for the roof and walls with white trim to match another Lodermeier’s building he purchased some years back.



Kevin Lewison

Kevin Lewison contracted with Lodermeier’s, Inc. once again to build this 48’x30’x12’ post frame building on his Lake City area farm. Some of the columns for this building were set on an existing foundation wall that was still in very good condition, and the rest of the columns were set in the ground. There are four 4’x3’ insulated vinyl slider windows and two 3/0 x 6/8 steel entry doors supplied by A.J. Mfg. installed on this building. A small entry was built on the west end wall of this building and two 10’x10’ steel overhead doors were installed to finish the job.



Improve the appearance of your next building...



Use AJ Manufacturing Roll Formed Doors and Aluminum Windows!



Building Ideas
A.J. Manufacturing, Inc. • 1217 Oak Street • Bloomer, WI 54724
1-800-328-9448 • www.ajdoor.com

• Implement
• Grain Equipment
• Buildings

LODERMEIER’S

lodermeiers.net
Goodhue, MN
651-923-4441



Quality & Service
since 1927

CEMSTONE

**Residential • Commercial
& Agricultural Applications**

- Ready Mixed Concrete
- Sand & Gravel
- Concrete Placing Services

Ask about AG-CRETE®
Cemstone’s Concrete mix
specifically designed for
agricultural applications



**SERVING - Cannon Falls • Hastings • Lake City
• Northfield • Red Wing, MN & River Falls, WI**

651.388.8996 • 800.325.6055
cemstone.com



John and Mary Wagner

The Wagners contracted with Lodermeier's, Inc. in late 2019 to have this new 30'x64'x12' post frame storage building built on their Zumbrota area farm in the summer of 2020. John was hesitant about the traditional post frame type construction where columns are set in the ground, so Lodermeier's offered up the idea of pouring concrete foundation walls first and then setting the columns on the walls. So, first the foundation footings and walls were poured and then the 5" thick concrete floor with a drain. Next crews came in and erected the building. The columns were attached to the foundation walls using SturdiWall brackets that were "wet set" in the foundation walls. Just a few of the other features on this project included, a 12'x10' Clopay insulated overhead door on the end wall, Pro Panel II burnished slate and light stone steel panels, and trims on the exterior.



Paul and Deb Burandt

The Burandts contacted Lodermeier's Inc. in 2020 with a desire to build a farm shop on their Prescott, Wisconsin area farm. After taking the Burandts on a brief tour of several other shops they decided to go with this 56'x64'x18' post frame type building. This beautiful shop has many great features. Just a few of those features include: a 30'x16' and 16'x16' insulated Clopay overhead doors, seven 4'x3' insulated vinyl slider windows from A.J. Mfg. a full insulation and steel liner package, an 11'x48' mezzanine with railing and stairs, a full office, a bathroom, and a parts storage area. A 6" thick concrete floor with an in-floor heating system completed this great project.



60 Ton - 165' height
36 Ton - 180' height
35 Ton - 160' height
32 Ton - 160' height
30 Ton - 160' height

CRANE SERVICE

with certified crane operators by NCCCO



- Implement
- Grain Equipment
- Buildings

lodermeiers.net
 Goodhue, MN
 651-923-4441



"Your Professional Concrete Supplier"

Give us a call and let our professionals help you with your project.

LOCATIONS TO SERVE YOU IN:

Zumbrota	732-5801	Dover	932-4020
Rochester	289-4022	Dodge Center	374-2565
Austin	437-8998	Stewartville	533-8809
Chatfield	932-4020	Builders Sand	288-3485

SPECIALIZING IN: Customer Service • Value Added Products • Concrete Pumping





A and G Ranch

Al and Gordy Bauer of Hastings were looking to upgrade the dryer on their farm. They went with a new MC Eco Series E600 dryer. Some of the features on the dryer included aluminum outside screens, dual-sided upper catwalk, Pinnacle 20/20 touchscreen control, MC Trax with remote control, 1ph to 3ph VFD with dryer, and a quiet centrifugal fan.

David Heublein

David Heublein of Lewiston contacted Lodermeier’s Inc. to design a major upgrade to his drying setup. After some Revit 3D drawings were drafted a lot of new equipment was ordered. The heart of the new setup was a new MC 101160 tower dryer. The dryer has 4 catwalks, aluminum screens, Pinnacle 20/20 dual touchscreen controls with MC Trax for remote monitoring, and the AccuDry moisture control system with DryMaster sensors. Next, a 975 bushel pit was installed sixteen feet in the ground. The pit has a 5,000 bph auger that feeds the Hyland Grain Systems wet leg. Dry corn is moved from the dryer through an HGS galvanized conveyor to an HGS 3,000 bph dry leg. Both legs are supported inside an HGS galvanized H beam support tower. Lodermeier’s also constructed two new bins. The first was a Brock 24’ x 17-ring bin with a capacity of 17,646 bushels for wet grain. It was constructed on a 4’ stemwall so the Brock powersweep can go directly into the leg boot. It also has a ShurStep stairway and low speed centrifugal fan. The second Brock bin was a 36’ diameter x 16-ring with a capacity of 38,351 bushels. The Brock Series 1500 powersweep has a vertical auger for easy unloading. The bin also has a side draw with a ShurStep stairway and a ShurStep to the eave.

SCHLAGEL

**EQUIPMENT THAT
REALLY MOVES**

1.800.328.8002
www.schlagel.com

MANUFACTURERS OF INNOVATIVE
MATERIAL HANDLING EQUIPMENT SINCE 1957

491 North Emerson Street
Cambridge MN 55008-1316 U.S.A.

**Sales and
Service by:**

- Implement
- Grain Equipment
- Buildings

lodermeiers.net
Goodhue, MN
651-923-4441



Carlson Farms of Goodhue

The Carlsons of Goodhue were in need of more storage this fall so they contracted with Lodermeier's Inc. to construct a new Brock 72' diameter x 59' eave bin with a capacity of 219,285 bushels. The commercial E-Series bin has a Brock Tri-Corr floor with Parthenon floor supports, a Brock 10" u-trough with a Series 2000 commercial sweep with tractor drives. Two large centrifugal fans keep the grain properly aerated. The bin also has a sidedraw with a hinged spout and ShurStep stairway.



Grobe Farms

Jim and Joe Grobe of Millville purchased a new Brock 48' diameter x 62' eave bin with a capacity of 99,972 bushels. The E-Series commercial bin has a Brock Tri-Corr floor with Parthenon floor supports, low speed centrifugal fan, Brock 1500 Series 10" powersweep, and 5th ring sidedraw.



Cory Hinrichs

Cory Hinrichs of Red Wing purchased a new Brock 36' diameter x 33' eave bin with a capacity of 30,078 bushels. Cory included in the bin a ShurStep stairway, 8" Brock Series 1500 powersweep, Brock Tri-Corr floor, and low speed centrifugal fan. Cory also had the Lodermeier's crew install a used air system and pour cement for his dryer and electric building.



Ken and Jason Lohman

Ken and Jason Lohman purchased from Lodermeier's Inc. a used Sukup T16 dryer. The Lodermeier's crew poured a pad and installed the dryer, and then installed a new Westfield portable auger from the dryer to the storage bin.



Quality Equipment ON YOUR FARM

AGI Hutchinson manufactures quality products, including portable and stationary grain handling equipment, augers, chain & paddle conveyors, belt conveyors, loop systems, bin unloads and custom augers.

For more information, visit aggrowth.com/hutchinson

- Implement
- Grain Equipment
- Buildings

LODERMEIER'S

lodermeiers.net
Goodhue, MN
651-923-4441



aggrowth.com

AGI HUTCHINSON

Mark and Bonnie Strusz

Mark Strusz called Lodermeier's Inc. in 2020 wanting to have a silo room rebuilt after some old silos were taken down. First, Lodermeier's had concrete foundation walls and a floor poured where the old silos stood. Once concrete was complete, the building crew came in and tore down some of the existing building. After demolition work was complete this 34'x 10'x8' building was built.

Wabasha Ready Mix

Precision Concrete Pumping & Placing
Residential • Agricultural • Commercial



Wabasha Plant
905 Church Ave.
Wabasha, MN
651-565-3610

Durand Plant
Division of Wabasha
1848 County Road D, Durand, WI
715-283-4244

WWW.GRAINSYSTEMS.COM

BUILT TO OUTLAST BUILT TO OUTPERFORM

ZIMMERMAN TOWER DRYERS

Not all tower dryers are created equal. What sets Zimmerman Tower Dryers apart from the competition is over 50 years of innovative design expertise and industry proven drying principles. The result is an easy-to-operate, easy-to-maintain, durable, fuel efficient grain dryer, supported by an expert dealer network that delivers peace of mind year after year.



UP TO FOUR ENTRY POINTS FOR
EASY CLEANOUT AND MAINTENANCE



TOUCHSCREEN PLC MAKES IT
EASY TO OPTIMIZE PERFORMANCE



GSI'S EXCLUSIVE PATENT PENDING
HEAT RECLAIMER AND PATENTED
GRAIN INVERTERS MAXIMIZE DRYING
EFFICIENCY AND GRAIN QUALITY



STORAGE + CONDITIONING + MATERIAL HANDLING + STRUCTURES

- Implement
- Grain Equipment
- Buildings

LODERMEIER'S

lodermeiers.net
Goodhue, MN
651-923-4441



Hildebrandt Enterprises LLC

Hildebrandt Farms in Prescott, Wisconsin needed to add additional wet holding capacity to their drying setup. They decided to go with a flat bottom Brock bin to fill that need. The bin is 21' diameter x 33' eave with a capacity of 9,800 bushels. Included with this bin is a quiet centrifugal fan, 8" powersweep unload, Brock Tri-Corr floor, and four roof vents.



Duane Wojcik

Duane Wojcik of Red Wing wanted to speed up his fall drying process and contracted with Lodermeier's Inc. to install a used Kansun 10-21-210 dryer. He also had Lodermeier's install a new JPS 4" air system with VFD controls and a quiet Tri-Lobe blower to fill his storage bin.



Boles Farms

Jay Boles of Prescott, Wisconsin hired Lodermeier’s Inc. to do a major upgrade of his drying setup. After careful consideration Jay purchased a new MC E700 continuous flow dryer. The dryer has many great features including aluminum outer screens, Pinnacle 20/20 dual touchscreen controls, AccuDry moisture controls, and upper service catwalk. Jay also upgraded the current 5” air system he had with a new JPS VariAir grain conveying system. The system features a Tri-Lobe blower and a VFD that controls the speed of the blower motor. This combination makes for a very quiet and reliable air system.



Kurt Afdahl

Kurt Afdahl of Hammond, Wisconsin was referred to Lodermeier’s Inc. by a previous customer when he wanted to purchase a new dryer. After a short conversation Kurt decided to buy a new MC Eco Series E600 dryer. The dryer features a low speed centrifugal fan that is very quiet. The dryer is equipped with a Pinnacle 20/20 dual touchscreen controller that can be remotely monitored and operated from anywhere in the world. It also has an AccuDry moisture control system with DryerMaster sensors that constantly monitors the grain going in and out of the dryer.



Borgschatz Inc.

Gary, Lyle, and Tanner Borgschatz of Pine Island have been very loyal customers of Lodermeier’s Inc. After Lodermeier’s did a big upgrade to the leg and wet bin a few years ago it was time to replace the dryer. After hearing how well the new MC Delta mixed flow dryer worked they knew right away that is what would replace the old screen dryer. The new MC D900H has many great features that include a dual upper service catwalk, tapered air ducts, quiet low speed centrifugal fans, and high efficiency Midco burners. The dryer is run from the PLC based Pinnacle 20/20 dual touchscreen controls. MC Trax allows them to monitor and run the dryer remotely. The AccuDry moisture control system accurately sends corn out the dryer at the desired moisture. They also backed up the dryer with a new JPS VariAir 40hp grain conveying system. The variable frequency drive makes the motor on the blower run at the desired speed so grain does not get damaged and keeps the system very quiet.



Mathews Company

GRAIN DRYER SPECIALISTS

MathewsCompany.com



ECO SERIES

GREAT VALUE

EFFICIENT

COMPACT



PINNACLE 20/20

CONTROL SYSTEM



MC Trax

Remote Control



One Tough Animal.

Visit our dealership to find the right Bobcat® equipment for your job.

Bobcat®, the Bobcat logo and the colors of the Bobcat machine are registered trademarks of Bobcat Company in the United States and various other countries. ©2021 Bobcat Company. All rights reserved. | 13674627



Huntsinger Farms

Huntsinger Farms of Eau Claire, Wisconsin had a major dryer fire in the fall of 2019 that wrecked their dryer and wet bin, so they contacted Lodermeiers and made the decision to rebuild. After a quick discussion they were sold on the new MC D1200H mixed flow grain dryer. The dryer features dual upper catwalks, a Dual Pinnacle 20/20 touchscreen controller with MC Trax, and the AccuDry moisture control system. Then Lodermeier’s constructed a new Brock 27’x33’ bin with a capacity of 16,530 bushels for wet storage. The bin has a Brock Tri-Corr floor for aeration, a Brock Series 1500 8” powersweep, ShurStep stairway, and low speed centrifugal fan.



Larry Michaelson

Larry Michaelson of Balsam Lake, Wisconsin contacted Lodermeier’s Inc. to bid on his new grain setup. After some careful planning Larry decided to hire Lodermeier’s to do his construction. His first purchase was the new MC D1200H mixed flow grain dryer. This screenless dryer includes upper service catwalk, AccuDry moisture controls with DryerMaster sensors, Dual Pinnacle 20/20 touchscreen controls, and MC Trax for monitoring. Larry installed a new JPS VariAir 5” blower and airlock to get his corn to the bins. A new LeMar tower and Sukup 5,000 bph leg were constructed to get the corn to the wet bin and dryer. Lodermeier’s then installed a new HGS 975 bushel dumpit with a full length grate. Late in the season Larry decided he was going to need more storage so a new Sukup 48’x62 bin was constructed. The bin has a capacity of 99,797 bushels. It features a Greene stairway, 5th ring sidedraw, 8” powersweep, and low speed centrifugal fans.



GRAIN DRYER SPECIALISTS
MathewsCompany.com



DELTASERIES
with SmartFlow™ technology

MIXED-FLOW DRYERS

HIGHEST QUALITY GRAIN

MAINTAIN CAPACITY OVER TIME



SCREENS TO CLEAN





Remote Control



PINNACLE 20/20
CONTROL SYSTEM



Keith Lexvold

Keith Lexvold of Goodhue contracted with Lodermeier's Inc. to install a larger wet corn bin on his grain site. He went with a Brock 27' diameter x 37' eave outside stiffened bin with a holding capacity of 18,600 bushels. The bin included a 3' tall foundation, 3hp centrifugal fan, 8" powersweep unload, and a Brock Shur-Step outside stairway.

LaVerne Kronebusch

LaVerne Kronebusch from Plainview decided during the summer that he wanted to add more on-farm storage to his grain site. He contracted with Lodermeier's Inc. and got his bin put up on schedule in time to fill it during harvest. The bin is a Brock 27' diameter x 7-ring with a capacity of 9,600 bushels. It includes a Brock Tri-Corr floor, 8" powersweep unload, electric grain spreader and four roof vents.



The Shivvers Performance System delivers maximum grain drying capacity using the most advanced, energy efficient products and tools on the market today.



If you are looking for **CAPACITY**, **QUALITY**, and **CONTROL**, Shivvers Grain Drying Equipment is exactly what you need. Whether you need to dry 20,000 or 200,000 bushels, we can get it done.

NOBODY DRIES LIKE US.



lodermeiers.net
Goodhue, MN
651-923-4441





Kenny Dohrn

Kenny Dohrn of Lake City purchased a Brock 24’ diameter x 26’ eave bin with a capacity of 10,167 bushels. The bin has a Brock Tri-Corr floor, 8” tube and well unload, six roof vents, and a Brock 3hp low speed centrifugal fan.



Hernkes Inc.

Hernkes Inc. of Cannon Falls contracted the Lodermeier’s professional crew to construct a new Brock 60’ diameter x 23-ring bin with a capacity of 156,067 bushels. The bin features Boone temperature cables, Brock Tri-Corr floor, low speed centrifugal fans, and Brock Series 1500 powersweep. The bin also features a side draw and a ShurStep stairway on both the side draw and to the eave.



Hinrichs Farms Inc.

Gary and Craig Hinrichs of Red Wing had a grain bin damaged in a late August storm. When it was decided the bin needed to be taken down a new Brock 42’x33’ bin was ordered. The floor and unload were reused but they upgraded to a ShurStep stairway and centrifugal fan.



Rod Jorgenson

Rod Jorgenson of Kasson contacted the Lodermeier’s sales staff to help him redesign his grain setup. He then purchased a new Brock 27’x16-ring bin with a capacity of 21,181 bushels for more wet storage. The bin was built on a 4’ stemwall foundation so that the Brock Series 1500 powersweep could drop directly into the wet leg. The bin has full floor aeration, ShurStep stairway, and low speed centrifugal fan. The wet leg was not tall enough to feed directly into the bin, so a Sudenga grain pump was installed to get wet corn to the new bin.



Lokker Farms

Lokker Farms of Baldwin, Wisconsin had Lodermeier’s Inc. construct a new Brock 42’x40’ bin with a capacity of 50,118 bushels. The bin includes a Brock Tri Corr floor with Parthenon floor supports, a Brock Series 1500 x 8” powersweep, ShurStep stairway and roof handrail, and a 15hp low speed centrifugal fan.



Pine Rose Farms

Todd McGiffin of Rice Lake, Wisconsin hired Lodermeier’s crew to construct a new Brock 48’x22-ring bin with a capacity of 94,191 bushels. The bin is very loaded up with low speed centrifugal fans, ShurStep stairway, sidedraw with ShurStep stairway, Brock Tri Corr floor with Parthenon floor supports, and a new Brock Series 1500 10” powersweep with 12” vertical auger.



Mark Wagenknecht

Mark Wagenknecht from Hampton needed more grain storage so he hired Lodermeier's Inc. to get the job done. A new Brock 36'x48' bin was constructed that holds 42,645 bushels. The bin has a ShurStep stairway, roof handrail, Brock Tri-Corr floor with Parthenon floor supports, a Brock 1500 Series powersweep, and low speed centrifugal fan.



Jon Romo

Jon Romo of Cannon Falls built a new grain setup this year. He hired Lodermeiers to construct a new Brock 36'x33' bin with a capacity of 30,078 bushels. The bin has a Brock Tri-Corr floor with Parthenon floor supports, Series 1500 8" powersweep, low speed centrifugal fan, and ShurStep stairway. Jon purchased a used wet bin and dryer and move them with help from his friends. Then Lodermeier's installed a new JPS VariAir grain conveying system. The air system uses variable speed control for the motor to make it run nice and smooth.

**A Brock
dealer
has all
the right
moves.**

**Solid grain handling
starts with proven insight.**

Brock dealers spend every day helping you keep your grain handling operation moving. They have thousands of hours of experience under their belts. So you know you are getting the right equipment to get your grain where it needs to go, safely and efficiently. Contact us today.



— BROCK SOLID® —
Authorized Independent Dealer

Storage | Handling | Conditioning | Structures



Terry Brothers

Terry Bros. of Northfield hired Lodermeier’s to construct a Brock 24’x22’6” 6-ring grain bin with a capacity of 8,770 bushels. The bin has ladder and cage with eave platform, Brock Tri-Corr floor with floor stands, Brock unload with power sweep, and roof auger for filling.



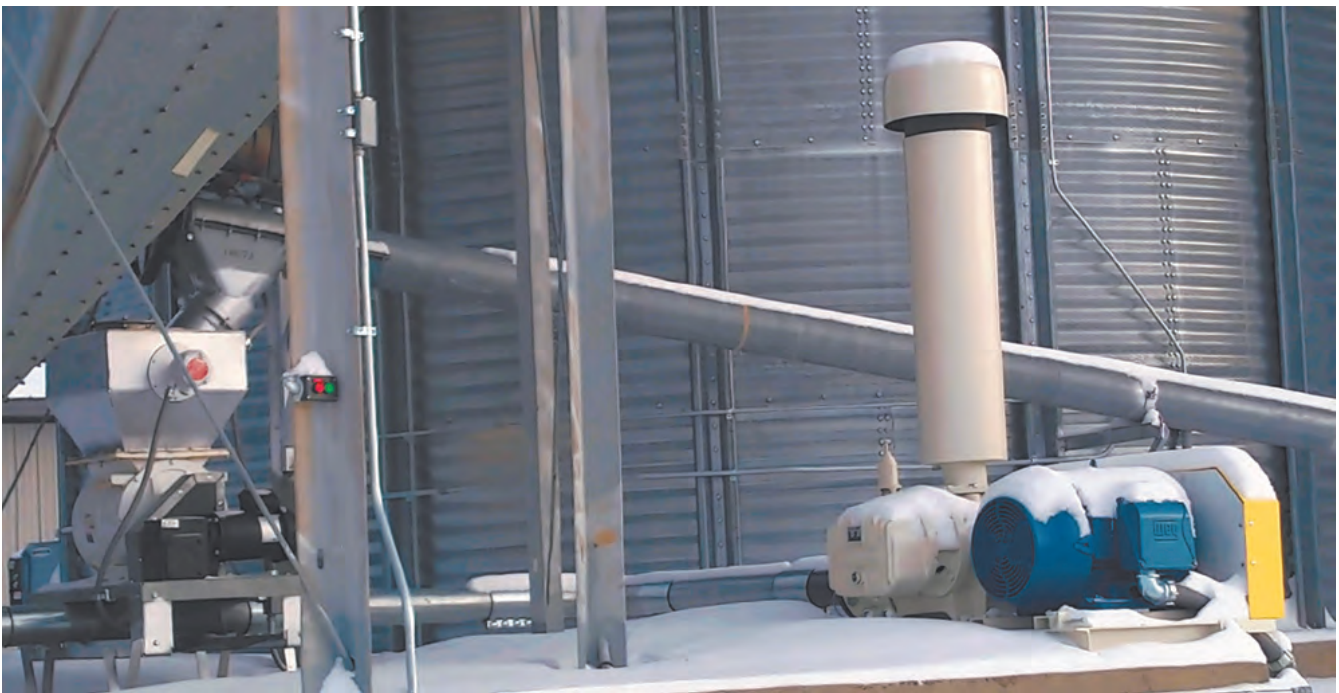
Steve Uthke

Steve Uthke of Eyota built a new grain setup this year. He moved his Kansun dryer across the road and had Lodermeier’s construct a new Brock 42’x40’ bin. The bin features a Brock Tri-Corr floor with Parthenon floor supports, 8” Brock series 1500 powersweep, low speed centrifugal fan, and ShurStep stairway. Steve also had Lodermeier’s install a used DMC air system to his new bin.



Ter Rae Farms

The Mitchells of New Richmond, Wisconsin were tired of cleaning the tower dryer they had. When they heard MC was building a mixed flow dryer they knew that was the dryer for them. Lodermeier’s installed a new MC D2400H mixed flow dryer. This dryer has all of the best options from MC including a Dual 20/20 touchscreen control and AccuDry moisture control system with DryerMaster sensors. The dryer is also equipped with a conveyor unload system. This is the largest MC Delta dryer in operation in the United States at the end of 2020.



Jerry Nelson

Jerry Nelson of Cannon Falls decided it was time to get rid of a small dry leg and a number of roof augers and have Lodermeier’s install a 5” JPS air transfer system. This system feeds four bins and has a 40hp motor on the blower controlled with a VFD. The system also has a magnum systems air lock, sight glass, large cyclones, and indoor control box.