

- **Implement**
- **Grain Equipment**
- **Buildings**

LODERMEIER'S

Located in Goodhue, MN • 651-923-4441

2019 PROJECTS 2020 ISSUE

PUBLISHED SINCE 1971



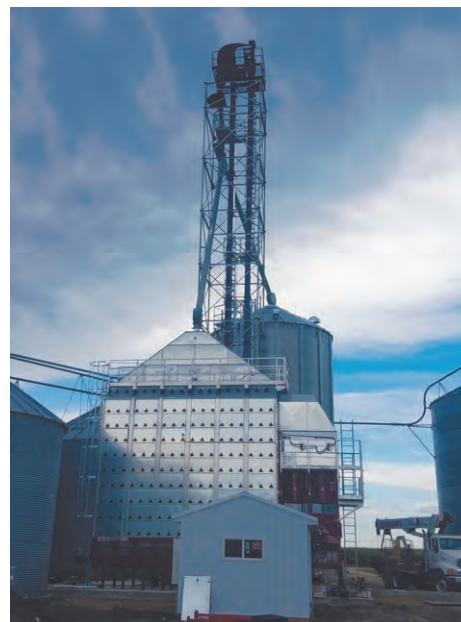
lodermeiers.net

“Celebrating Our 73rd Year In Business”



Gene Knott

Gene Knott of Kenyon worked with the Lodermeier's sales staff to design a significant upgrade to his drying and storage facility. After careful consideration of his options, Gene decided to purchase a new Mathews Company mixed flow grain dryer. The new Mixed Flow dryer from MC has very quiet inline centrifugal fans and high efficiency Midco burners. The dryer is controlled with the MC Pinnacle 20/20 touchscreen control that can be remotely monitored and controlled with MC Trax. Moisture control is handled easily with the DryMaster AccuDry moisture control system. To handle all the incoming grain, a new Sudenga curved inclined drag conveyor was installed along with a new 8,000 bph Sudenga grain leg. The leg is supported with a LeMar galvanized support tower. Gene also had the Lodermeier's crew construct two new bins. The first bin constructed was for wet corn. It is a Brock 24' diameter x 15 ring bin with a capacity of 15,616 bushels. The bin was constructed on a foundation so the discharge auger could go directly into the leg hopper. The second bin constructed was a 36' diameter x 48' eave bin with a capacity of 42,645 bushels. The bin has a Tri-Corr floor, 8" powersweep, and centrifugal fan.



Thank you for a great 2019!





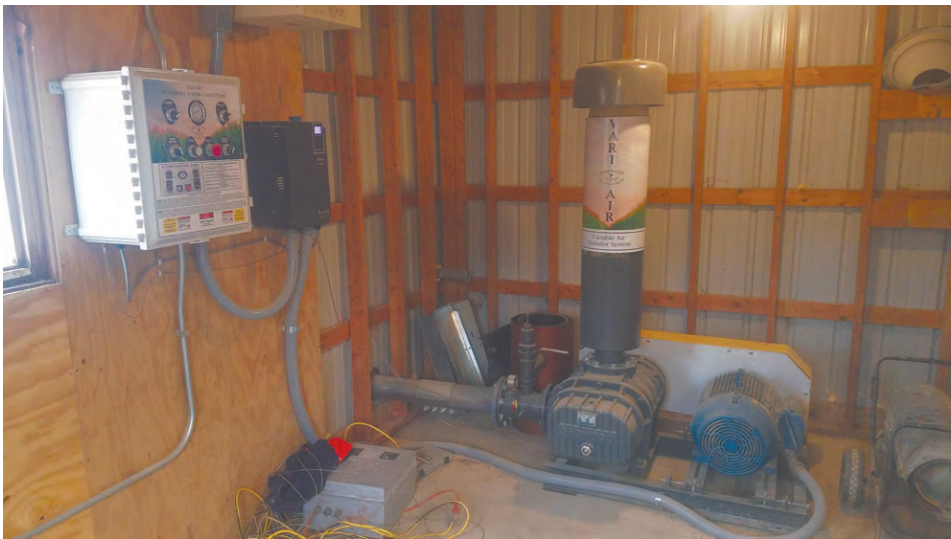
Danny Benson

Danny Benson of Cannon Falls made several improvements to his grain facility this year. Danny first added a ring to his wet bin to increase his holding capacity. Then he had the Lodermeier’s crew install a new JPS VariAir grain conveying system. This system uses a variable frequency drive to convert power to 3-phase and controls the speed of the blower to safely move the grain. Danny also purchased a new Brock 36’ diameter x 12 ring bin with a capacity of 29,213 bushels. The bin has a Tri-Corr floor with Parthenon floor supports, 10” powersweep, and low speed centrifugal fan.



P & J Products

P & J Products of Northfield had significant damage to their grain setup from a late summer storm in 2018. They hired Lodermeier’s to rebuild it for them. They built two new Brock bins. One is a 36x37 that holds 33,220 bushels and the second is a 30’x37’ and holds 22,749 bushels. Both have Brock Tri-Corr floors with Parthenon floor supports and 8” power sweeps. They also had Lodermeier’s install a new JPS VariAir 5” grain conveying system. The blower has a 30hp motor controlled with a VFD. The air system also has cyclones, sight glasses, and a bin distributor.



Grobe Farms

Jim and Joe Grobe of Millville purchase a new JPS VariAir 5” grain conveying system from Lodermeier’s. The system includes a 30hp blower controlled with a VFD, large lined cyclones on each bin, sight glasses, and bin distributor. All controls and blower are inside their electric building, and it is still very quiet.

Brett Lindskoog

Brett Lindskoog of Odebolt, Iowa made an on-farm visit with the Lodermeier’s staff to look at a new Delta dryer. After some discussion about his grain setup he purchased a new JPS VariAir grain conveying system from us. The blower has a 40hp motor and is controlled with a VFD for proper speed of the grain.

Vari-Air

Vari-able Speed Grain Conveying Systems
Complete Systems—Controls—Accessories
Designed for Agricultural Applications

- Implement
- Grain Equipment
- Buildings

LODERMEIER'S

lodermeiers.net
Goodhue, MN
651-923-4441

VARI-AIR DESIGN—TRI LOBE

- Less than 1/2 the noise than a twin lobe
- Less than 1/2 the blower rpm than twin
- Less back pressure spikes for longer lifetime
- 3 lobes delivers more air than 2 lobes
- Steady air flow with 3 lobes
- PSI Control for precise load control
- Variable Frequency Drives for efficient operation
- Customization available on every system
- Installation Services
- Factory Trained Support Staff
- Innovative Accessories
- Complete Parts Availability
- UL/ETL Listed Control Panels
- 24/7 Support on all products
- 4" to 12" Blower Systems Available



MULE[®]

TRUSTED TRIED AND TRUE

Kawasaki
Let the good times roll[®]



MULE™ 4010 4x4

MULE PRO-FXT™ EPS LE

MULE PRO-MXT™ EPS LE

MULE PRO-MXT™ EPS

MULE PRO-FXR™

MULE SX™ 4x4 XC LE FI

THE RUGGED LINEUP OF MULE™ SIDE X SIDES IS BUILT FOR THE LONG HAUL

RUGGED CAPABILITY
TO TACKLE THE TOUGHEST JOBS

BUILT TOUGH
TO STAND UP TO ANY CHALLENGE

KAWASAKI STRONG
3-YEAR LIMITED WARRANTY



• Implement
• Grain Equipment
• Buildings
LODERMEIER'S

lodermeiers.net • Goodhue, MN
651-923-4441

KAWASAKI CARES: Read Owner's Manual and all on-product warnings. Always wear protective gear appropriate for the use of this vehicle. Never operate under the influence of drugs or alcohol. Protect the environment. The Kawasaki MULE™ side x side is an off-highway vehicle only, and is not designed, equipped or manufactured for use on public streets, roads or highways. Obey the laws and regulations that control the use of your vehicle. ©2019 Kawasaki Motors Corp., U.S.A.

Assembled in the U.S.A. badge does not apply to the MULE PRO-MX™ models.
Accessorized unit shown.

20TTTMULE12X21C





MHL Farm Hill Grain LLC

Mike Larson of Pepin, Wisconsin needed to add more grain storage on his farm. He contracted with Lodermeier’s to construct a new Brock 36’ diameter x 33’ eave bin with a capacity of 30,079 bushels. The bin includes full floor aeration, 8” powersweep, quiet low speed centrifugal fan, electric grain spreader, and Boone temperature cables.

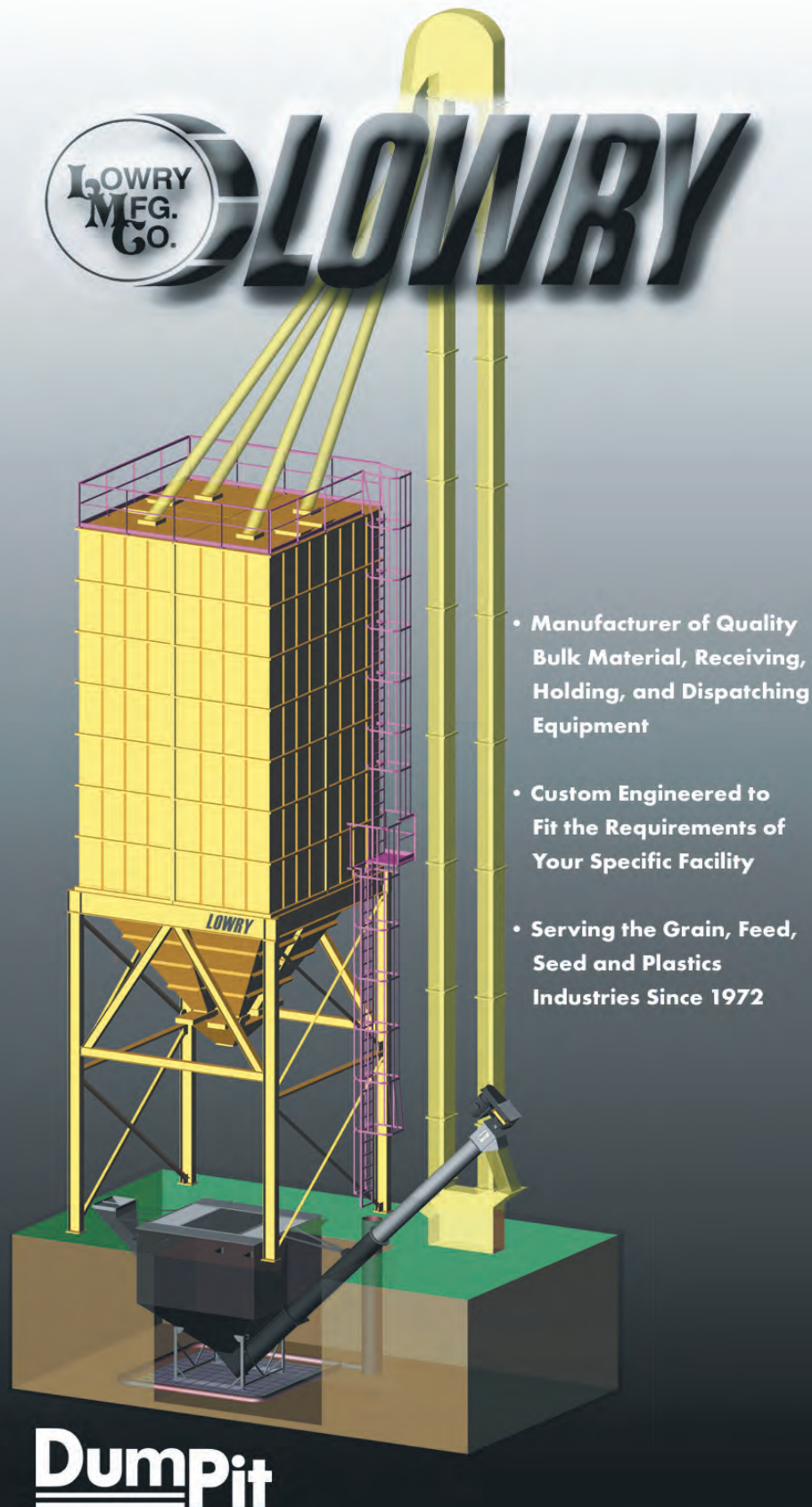


Versatile row crop tractors are designed to maximize efficiency on your farm. Featuring a powerful 9.0L Cummins engine paired with a 16x9 powershift, Versatile row crop tractors have been designed to be simple to operate and easy to service and maintain. Available from 265 to 365 horsepower.

 **VERSATILE**
WWW.VERSATILE-AG.COM

Roger Walkes

Roger Walkes of Plainview wanted to make his unloading of wet grain easier, so he purchased a new Lowry 75-bushel dumpit from Lodermeier's. The installed dumpit has a 10" auger with a 20hp motor. Roger only has single-phase power so a JPS control panel with a VFD was also installed to change the power to 3-phase.



317 Cherry Street, Box 121 • Lowry, MN 56349 • (320)283-5450 or (800) 950-4792



Scott Gustafson

Scott Gustafson of Dennison had severe damage to his grain setup last summer and had to rebuild three of his grain bins. Scott chose Lodermeier's to do the construction on the new Brock bins. Two of the bins were 30' in diameter x 40' eaves and the other bin was a 24' diameter x 40' eave. The bin totaled a capacity of 55,000 bushels. They all have Brock Tri-Corr floors with Parthenon floor supports, 8" powersweeps, ShurStep stairways, and low speed centrifugal fans. Scott also had the Lodermeier's expert crews repair a bunch of other damage done to his grain setup.



Paul Betcher

Paul Betcher of Goodhue purchased a Brock 15' diameter x 6-ring hopper bin from Lodermeier's. The bin has an all access hopper, 16" rack & pinion gate, and 4" auger.

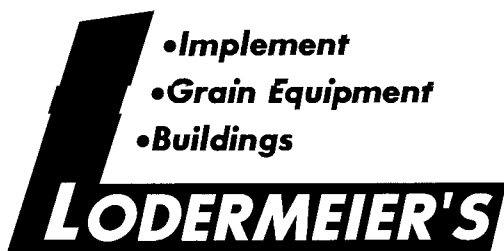


Glen McNamara

Glen McNamara needed more storage and more drying capability so he contacted Lodermeier's and decided to build a Brock 30'x18'6" with approximately 9,000 bushel drying bin. The bin has a Shur Step stairway with platform, roof handrail, full floor, under floor cleanout doors, 8" power sweep unload, 15hp Centrifugal fan, mod-valve controlled down stream heater, GSI 3-auger stir-ator and grain spreader.

StirAtors

The Design III StirAtor can turn a grain bin into a drying system at a minimum investment. A high temperature, above 10 degree rise, bin dryer has to have a way to dry all the grain to the same moisture. Just running a fan and heater on a bin full of grain will result in 5% grain at the bottom with no moisture removed on the top. A GSI StirAtor ensures that all the grain is the same moisture without requiring a wet tank.



- Implement
- Grain Equipment
- Buildings

lodermeiers.net
Goodhue, MN
651-923-4441

STIRATOR FEATURES:

Rugged Drive: A strong 3/16" aircraft cable drives the machine. No reversing switches.

Disconnect Box: Fused disconnect box protects motors.

Automatic Shut-Off: Shuts the StirAtor down if the trolley binds.

Fused Gear Motor: Protects against electrical problems.

Sealed Bearings: Low maintenance.

Solid State Electronic Tilt Switch: Replaces the mercury switch. Controls the forward motion of the machine. No moving parts.

Gear Motor Ratio: GSI StirAtors use a 9 RPM gear motor.

It's so easy to keep a Gleaner running at peak performance, even you can do it.



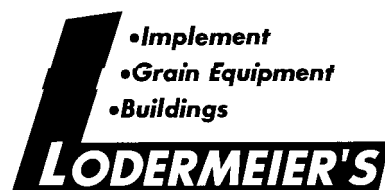
GLEANER COMBINES HAVE MOST PULLEYS AND BELTS LOCATED ON EITHER SIDE OF THE MACHINE AND AT GROUND LEVEL FOR EASY ACCESS.

All combines have things that wear out. The difference is how many, how long and how much. A Gleaner does not have the costly and complicated feeding systems you'll find on other combines so you won't have to replace them. The transverse design of a Gleaner puts belts and pulleys on the outside of the machine and at ground level for easy access. It all equals less time and money to keep your combine running at peak performance.

If your combine's repair cost is wearing you out, take a quick moment and learn why Gleaner combines are built with the farmer in mind. Visit gleanercombines.com or your Gleaner dealer.

GLEANER

BUILT WITH THE FARMER IN MIND



- Implement
- Grain Equipment
- Buildings

lodermeiers.net
Goodhue, MN
651-923-4441

©2017 AGCO Corporation. Gleaner is a brand of AGCO Corporation. • GL17P001ST

AGCO • 4205 River Green Parkway, Duluth, GA 30096 • gleanercombines.com

AGCO may at any time, and from time to time, for technical or other necessary reasons, modify any of the data, specifications or warranty of the products described herein. Some equipment shown may be optional. Attention: Photographs in this publication may show protective shields or guards open or removed for the purposes of illustration. Be certain all shields and guards are in place during operation.



Kevin Hadler

Kevin Hadler of Lake City hired Lodermeier's crews to construct a new Brock 18' x 7-ring bin with a capacity of 5,602 bushels. Installed in the bin was a Tri-Corr full aeration floor, 6" Sukup powersweep, and an 18" axial fan.



Rob McCallum

Rob McCallum of Hastings had Lodermeier's expert crews construct a new Brock 48' diameter x 18-ring commercial bin. The bin holds 77,940 bushels of corn. It features a Brock Tri-Corr full floor aeration, ShurStep stairway, eighth ring side draw, two 10hp low speed centrifugal fans, and a Grain Saver 10" u-trough powersweep.



MATERIAL HANDLING



Small or large operation...
We've got the material handling
SOLUTIONS[®]
for you!



www.sukup.com

- Implement
- Grain Equipment
- Buildings

LODERMEIER'S

Goodhue, Minn. 55027



Rick Reinsch

Rick owns a farm by Hader and needed more grain storage so he contacted Lodermeier’s and it was decided to build a new Brock 48’ diameter x 44’ cave bin with a capacity of 71,862 bushels. Rick installed a ShurStep stairway, 10” u-trough powersweep, 15hp low speed centrifugal fan, Tri-Corr floor, and electric grain spreader.



Gary Samuelson

Gary Samuelson of Cannon Falls hired Lodermeier’s to construct a new Brock grain bin. The bin has a capacity of 69,814 bushels. The bin has a Tri-Corr floor with Parthenon floor supports, seventh ring side draw, 10” powersweep, and low speed centrifugal fan.



**Tuff Face Insulation:
Superior Condensation Blanket**

Our Tuff Face Insulation Blanket is a wide-width condensation blanket consisting of a white, smooth, cross laminated wall insulation blanket, designed specifically for agricultural constructin in new or retrofit applications. Often, it is referred to as ‘peck proof’ because of its bird resistant qualities.

***Your Local
Dealer:***

AMD Distribution
1021 Kasten Drive
Spring Valley, MN

- Implement
- Grain Equipment
- Buildings

LODERMEIER'S
Goodhue, MN • 651-923-4441



White Planters™ designed. Precision Performance.

Planting a seed for its top yield does not come down to a single variable. Singulation, depth, trench quality, residue management and fertilizer can each play a role to help or hamper your yield. Knowledge of how each variable can affect your crop performance inspired us to develop a planter to give you the very best in what benefits your yield.

The next-generation White Planters™ 9800VE Series combines the tested White Planters design with cutting-edge Precision Planting® technologies. From the vSet® meter that can provide unrivaled accuracy across crops, seed sizes and conditions to the DeltaForce® variable down force system that gets seeds to the right depth without over-compacting the trench, you'll get top performance that you can see in real time on your 20/20 SeedSense® monitor.

The next generation White Planters 9800VE Series. Knowledge is yield. white-planters.com



WHITE
PLANTERS

Precision Planting®
DeltaForce® SeedSense® vDrive® vSet®

- Implement
- Grain Equipment
- Buildings

LODERMEIER'S

lodermeiers.net
Goodhue, MN
651-923-4441



Computer illustrations used to display frame configurations may omit some product details including safety-related items such as SWP, reflectors and lighting. Always properly maintain and use all safety-related product features according to operator manual instructions.
AGCO may at any time, and from time to time, for technical or other necessary reasons, modify any of the data, specifications or warranty of the products described herein. Some equipment shown may be optional.
Illustrations in this publication may show protective shields or guards open or removed for the purposes of illustration. Be certain all shields and guards are in place during operation. Printed in the U.S.A.
White Planters is a brand of AGCO.
AGCO and White Planters are trademarks of AGCO Corporation, Vero, Delta Force, Precision Planting and 20/20 SeedSense are trademarks of Precision Planting LLC.
© 2016 AGCO Corporation, 4201 River Green Parkway, Duluth, GA 30096 • www.agcocorp.com • WP16P00033



Clemenson Farms
Jerry and Brian Clemenson of Zumbrota purchased a new Brock bin from Lodermeier's. The bin is equipped with a Brock Tri-Corr floor, Shur Step stairway, 8" powersweep, and roof vents.

SOLUTIONS...

MORE INFO ON THE WEB:
WWW.SUDENGA.COM

BIN SWEEPS

U-T POWER SWEEP

NEW!

- True zero entry D150 industrial bin sweep
- Motorized tractor or floor mounted track advancement.
- For grain depth of up to 150" and bins to 132' in diameter.
- Capacities to 10,000 bushels per hour.

POWER SWEEP CLEAN FLOOR KIT

NEW!

- Clean closer to the floor with your power sweep!
- Exclusive self cleaning reduction end wheel leaves less grain depth at wall!

EXTEND-A-SWEEP

For bins to 156' in diameter or rectangular flat storage!

Sudenga INDUSTRIES, INC.

1888 125 YEARS 2013

2002 KINGBIRD AVE. GEORGE, IA 51237 • E-MAIL: SALES@SUDENGA.COM • TOLL-FREE: 1-888-SUDENGA

WESTFIELD

The MKX Series features over 75 proven performance enhancements; providing you with everything you've come to expect from your favorite auger.

- MX 100 • up to 6,600 bph • 53' - 83' lengths
- MX 130 • up to 11,000 bph • 64' - 114' lengths
- MX 160 • up to 23,000 bph • 85' - 125' length

IT'S NOT AN ORDINARY AUGER... IT'S A WESTFIELD.

866.467.7207 | grainaugers.com

**Implement
Grain Equipment
Buildings**

LODERMEIER'S

lodermeiers.net
Goodhue, MN
651-923-4441

AGI
AG GROWTH INTERNATIONAL



Solid.

Support as strong as our steel.

Smart recommendations. Reliable service. Trusted relationships. It's what being a Brock dealer is all about. Doing whatever it takes to protect your crop and keep your farming operation working without problems. Because when we stand together, nothing can stand in our way.

BROCK SOLID® means we've got your back. Contact us today.



— BROCK SOLID® —

Authorized Independent Dealer

Storage | Handling | Conditioning | Structures



Marty Amundson

Marty Amundson of Goodhue needed more grain storage, so he contacted Lodermeier's to construct a new bin. The new Brock bin with a capacity of 58,672 bushels has a 10" powersweep, full floor aeration, 15hp low speed centrifugal fan, and a Boone temperature cable system.



Mehrkens Family Farms

The Mehrkens family of Lake City worked with Lodermeier's sales staff to purchase a new Brock 36' diameter x 33' eave bin that has a capacity of 30,078 bushels. The bin has a 10" powersweep, axial fan, roof handrail, and Brock Tri-Corr floor for aeration.



Reed Lexvold

Reed Lexvold of Goodhue started a new grain setup from scratch. Reed looked around and found a small Kansun dryer and wet bin. He then hired Lodermeier’s to construct a new bin. The bin is a Brock 36’ diameter x 33’ eave bin with a capacity of 30,076 bushels. The bin has full floor aeration, ShurStep stairway, 8” Brock powersweep, low speed centrifugal fan, and electric grain spreader.



Larry Conrad

Larry Conrad and Mike Ludwig of Dundas had a bin damaged by a storm last summer, so they chose to replace it with a new Brock bin. The bin is 42’ in diameter x 40’ eave and holds 49,995 bushels. They were able to salvage and reinstall the existing Brock floor and powersweep.

The REM GrainVac VRX & VR12 are available with a wide assortment of accessories to make your job faster, easier and now cleaner with the REM Dust Collector. The Dust Collector keeps you and your farm yard clear of dust and debris. Contact your REM dealer for more information.

VRX Features:

- 49’ standard hose length
- Up to 6,000 bph
- 85 HP requirement

VR12 Features:

- 52’ standard hose length
- Up to 10,000 bph
- 130 HP requirement

- Implement
- Grain Equipment
- Buildings

lodermeiers.net
Goodhue, MN
651-923-4441

877.667.7421 | grainvac.com

BUCKET ELEVATORS AND CHAIN CONVEYORS.
BUILT FOR YOU. DESIGNED TO LAST.
THE DIFFERENCE IS IN THE DETAILS.

Sudenga
INDUSTRIES, INC.
WWW.SUDENGA.COM

- Implement
- Grain Equipment
- Buildings

LODERMEIER’S INC.
651-923-4441
38241 COUNTY 6 BLVD
GOODHUE, MN 55027
WWW.LODERMEIERS.NET

AN AUTHORIZED SUDENGA DEALER

SHALLOW DOUBLE DRIVE OVER
CAPACITIES UP TO 17,500 BPH
AND A LOW-PROFILE DESIGN MAKE THIS CONVEYOR SYSTEM A VERSATILE SOLUTION.



Fahey Farms

Tom and Chad Fahey of Rosemount had a tower dryer fire in 2018 so they decided to replace the damaged dryer with a new MC10950 continuous flow tower dryer. The dryer has aluminum outer screens, a Pinnacle 20/20 touchscreen control, MC Trax for remote monitoring and AccuDry automatic moisture controls.



Mathews Company

GRAIN DRYER SPECIALISTS

MathewsCompany.com



MODULAR TOWER SERIES

MAX EFFICIENCY

HIGH CAPACITY

BUILT TO LAST





Remote Control



PINNACLE 20/20

CONTROL SYSTEM



Callstrom Farms

Callstrom Farms of White Rock decided they needed to add storage to their grain setup. So they contacted Lodermeier’s to construct a new grain bin. The new Brock bin is a 42’x48’ with approximately 58,627 bushels. It has a 15hp centrifugal fan, full floor, 10” powersweep unload, outside ladder, inside ladder, roof handrail and sidedraw. They also needed a way to fill the new bin along with three existing bins so they decided to have Lodermeier’s install a 5” outdoor control panel JPS air system. This air system has a 30hp motor on the blower controlled by variable frequency drive (VFD) that controls the speed of the blower motor. There is also a jump auger from the dryer discharge to the airlock witch is also controlled by a VFD to slow down or speed up the jump auger. The 5” piping goes to a sight glass and a bin wall distributor that distributes to all the bins. All the bins have rooftop Cyclones.



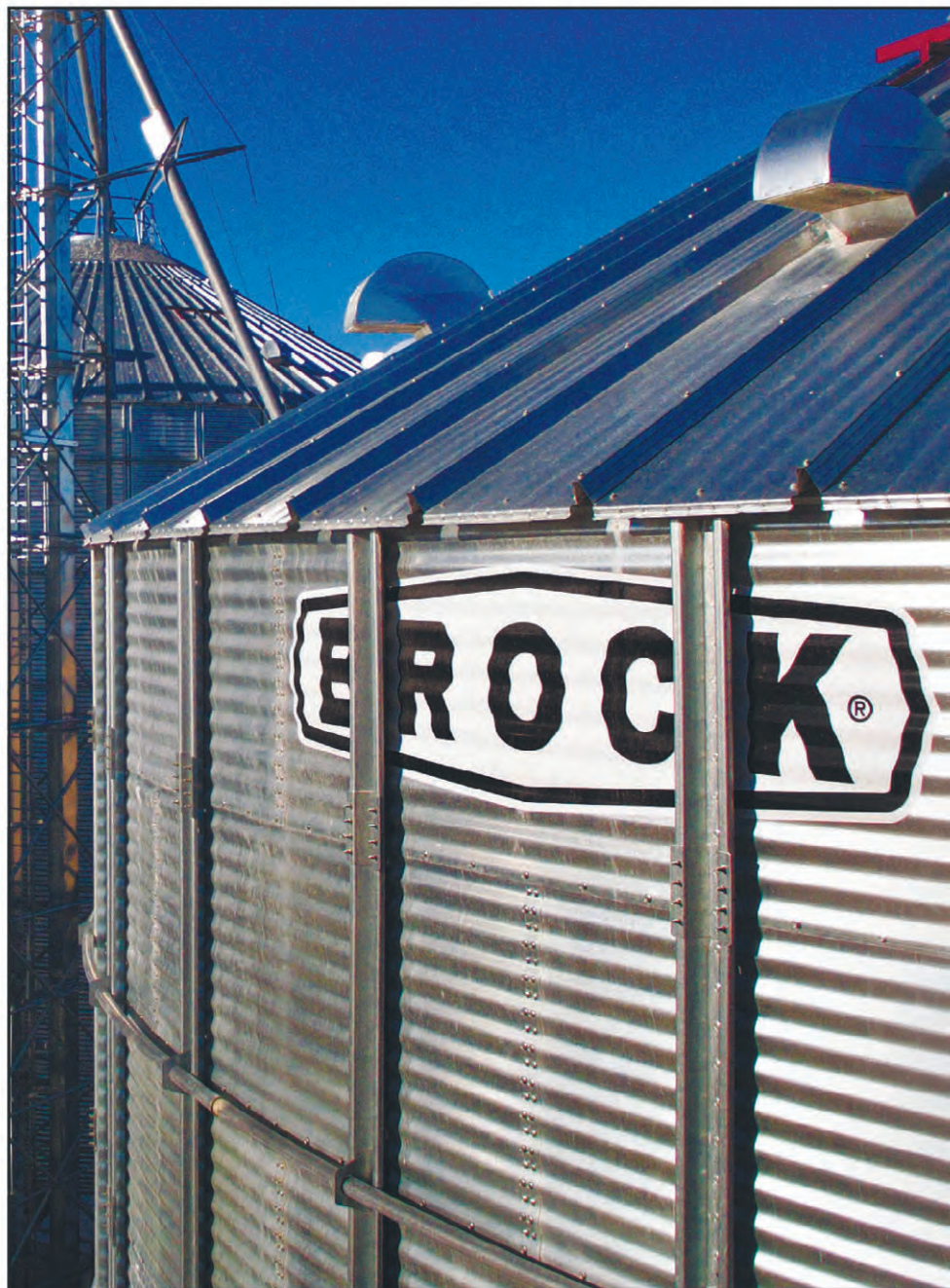
Westdale Farms LLC

Dale and Rick Wester of Centuria, Wisconsin contacted Lodermeier’s with interest in pricing a new bin. After meeting with them a contract to construct a new Brock 90’ diameter x 40-ring tall E-Series commercial bin was signed. The bin hold 614,471 bushels. The Westers installed a Shur Step stairway all the way to the roof of this large bin. It has a double H aeration tunnel with Tri-Corr planks and Parthenon floor supports. Aeration is supplied to these tunnels with four 40hp high speed centrifugal fans. Two side draws make unloading the first corn in the bin easy and the rest of the corn will be unloaded with a Brock Series 3000 sweep with tractor drives and a Brock unload conveyor. Corn in the bin is monitored with Intelliar cables that can be read with a Bluetooth device that can read moisture and temperature. The bin is filled using a Brock conveyor that sits on a LeMar tower and catwalk.



Dennis Bork

Dennis Bork of Independence, Wisconsin called Lodermeier's because he had interest in a used dryer. After several discussions with Dennis a brand-new grain setup was designed on our 3-D Revit system and all the new equipment was ordered. Two new Brock 42' diameter x 15-ring bins were constructed first. Both bins hold 49,717 bushels and have full floor aeration, low speed centrifugal fans, 8" power sweeps, Boone temperature cables, and share a ShurStep stairway. Next, a new Brock 24' x 15-ring bin with a capacity of 15,616 bushels was constructed to hold the wet corn. This bin also has full floor aeration, centrifugal fan, Brock 8" power sweep, and ShurStep stairway. The bin is filled with a new Westfield MKX 13'x91' portable auger. A new MC E700 continuous flow dryer was installed to efficiently dry his crop. The dryer has aluminum outer screens. Lastly a new JPS VariAir 5" grain conveying system was installed to move the dry corn to his new bins. The bin features a 40hp blower with a VFD for easy and gentle control of his grain.



Solid.

Don't trust your grain to anything less.

When it's time for harvest, you have days, not weeks, to get your grain out of the field and safely stored. That's why Brock grain systems are built to deliver day-to-day reliability and long-lasting durability to protect your crop and your livelihood. BROCK SOLID® means your grain storage, handling, conditioning and structures will stand up to the challenge.

Contact us today.



— BROCK SOLID® —

Authorized Independent Dealer

Storage | Handling | Conditioning | Structures



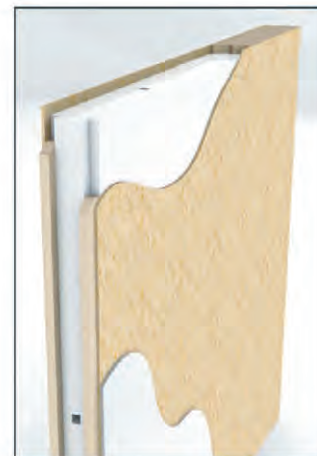
Ron, Judy and Aaron Scripture

The Scripture family contracted with Lodermeier's in 2019 to erect this 50'x80'x18' post frame shop on their Red Wing area farm. For additional storage a 16' x 32' lean-to type addition was also constructed on the west side of the main shop. Some of the great features on this shop include, twelve 4'x3' insulated slider windows, three steel entry doors, 2' vented and eave and gable overhangs and also 3' wainscot steel panels on the exterior. The Scripture family decided that one 16' x 16' overhead door and a 20' x 16' overhead door would fit their needs. Ash gray and zinc gray Pro Panel II steel panels from Metal Sales Mfg. were used on the exterior walls and roof. A bright white Pro Panel II steel liner panel was used on the interior walls and ceiling. Once the building was completed a 6" thick concrete floor was poured inside the building with a small apron on the exterior.

Let's Talk Shop!

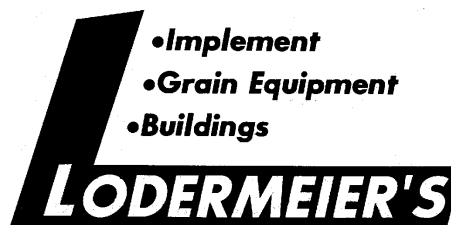
Compared to a conventional shop or storage building, an EPS SOLID CORE building can reduce your heating and cooling costs up to 50%.

- ▶ Broad custom design capabilities offering:
 - Larger clear-spans up to 100' wide and 24' tall
 - Vaulted ceilings
 - Solid exterior and interior continuous OSB or plywood sheeting and interior liner options of steel or FRP.
- ▶ Closed cell foam walls stop the transfer of moisture that results in rust and corrosion.
- ▶ Better acoustics for a quieter building



- **Efficient**
- **Comfortable**
- **Durable**
- **Low maintenance**

Call today to learn more about what makes the difference!



lodermeiers.net
Goodhue, MN
651-923-4441





Kurt Ronningen

Kurt Ronningen purchased the materials for this 36' x 100' x 14'6" eave height Butler steel building from Lodermeier's in 2019. Kurt and his help poured all the concrete piers and foundation walls and then erected the building. This building has a 12' x 50' canopy on the south side and 50' of polycarbonate light panels on the south side for more natural lighting inside. Once completed, the building will be used for housing heifers on Kurt's West Concord area dairy farm.



Wes and Maureen Scheffler

Wes Scheffler contacted Lodermeier's in 2019 with an idea for a project on his Cannon Falls area farm. The Schefflers planned on taking down an old dairy barn and wanted a new building put up in it's place. After some discussion and planning this 36' x 60' x 12' post frame building was added on to the end of an existing building and directly on the site of the old barn. Forty feet of the building is open to the east. Wes wanted 4' tall concrete walls poured between the posts, and a steel service door was added on the SW corner. Once completed, this building will serve as a calving area for the Schefflers' beef herd.



Andy and Krystal Thomforde

The Thomfordes contacted Lodermeier's in the spring of 2019 with a need for a new garage on their farm east of Goodhue. After some planning and discussion Andy and Krystal purchased this 32'x40'x10' postframe garage. Once the Thomfordes had completed the demolition of an existing building, Lodermeier crews went to work on the new building. Some of the features included on this project were the vented eave and gable overhangs, the 6' x 12' porch area on the SE. corner and also the 18'x8' insulated overhead door with operator. A 4" thick concrete floor was poured inside the garage to complete the project.



Due North Self Storage

Marcus Johnson and his partners purchased this 40' x 110' x 9'4" Butler Mfg. self storage building from Lodermeier's in 2019 and had our crews erect it on their Wabasha property. The storage facility is made up of twelve storage units that are 10'x20' and twelve that are 10'x10'. Marcus chose to have Butler's MR-24 standing seam roof system installed on the roof. A 3" fiberglass blanket insulation was also installed under the roof for condensation control.

BUTLER® BUILDING SYSTEMS

Ideal for warehouse facilities



Kent and Keith Bauer

Kent and Keith Bauer of Faribault wanted to upgrade their drying system, so they purchased a new MC E400 continuous flow dryer. The dryer includes a quiet centrifugal fan, aluminum outer screens, Pinnacle 20/20 touchscreen control, MC Trax, and AccuDry moisture controls. They also installed a new JPS VariAir 5” grain conveying system to their bins. The blower has a 30hp motor that is controlled with a VFD for gentle grain handling.

Todd Dicke

Todd Dicke of Red Wing had Lodermeier’s crews do a major upgrade to his drying setup. Todd purchased a Brock 8,000 bph grain leg with an 80’ discharge height to feed his wet bin and dryer. The leg is all galvanized construction and has a Schlagel distributor to change location of his grain. The leg is supported with a LeMar 10’x10’ galvanized support tower. The trucks dump their grain into an 8,000 bph Brock curved inclined conveyor that sits in a 3’ deep tunnel. A new Brock 24’ bin was installed on his hopper to hold 9,206 bushels of wet storage.

For Systems Large or Small We have it all



The Shivvers Performance System delivers maximum grain drying capacity using the most advanced, energy efficient products and tools on the market today.

SHIVVERS®

If you are looking for **CAPACITY**, **QUALITY**, and **CONTROL**, Shivvers Grain Drying Equipment is exactly what you need. Whether you need to dry 20,000 or 200,000 bushels, we can get it done.

NOBODY DRIES LIKE US.

- Implement
- Grain Equipment
- Buildings

LODERMEIER'S

lodermeiers.net
Goodhue, MN
651-923-4441





Wayne and Brittany Thomforde

This 32'x32'x13' post frame building with a 10'x32' lean-to was erected in 2019 for Wayne and Brittany Thomforde on their Zumbrota area property. The insulated overhead door on the end wall measures 12' wide x 11' high, and the sliding door under the lean-to is 8' x wide x 10' high. The Thomforde's chose bright white and black Pro Panel II steel panels for the siding and roofing material. A couple of other items that were included on this project were the two 4'x3' insulated vinyl sliding windows and a 3/0 x 6/8 steel entry door.



**Fabricators of Wood Floor and Roof Trusses
Laminated Columns and Structural Steel
Distributors of i-Level
Engineered Wood**

- Implement
- Grain Equipment
- Buildings

Sales by:

LODERMEIER'S

lodermeiers.net • Goodhue, MN • 651-923-4441



Todd Rodgers

Todd Rodgers contacted Lodermeier's in 2019 wanting to put up an insulated shop on his Kenyon area property. After sharing some different ideas and some planning Todd decided to go ahead and build this 40'x60'x16' post frame building. For construction of the building we used 3-ply 2x6 laminated columns and engineered roof trusses all manufactured by Littfin Truss. Once the framework was all up crews installed a house wrap product on the exterior of all the walls. The siding and roofing were red and charcoal colored Pro Panel II steel panels from Metal Sales Mfg. The two overhead doors are 16' x 14' and 12' x 14' with operators and radio controls. Todd had three inches of closed cell foam insulation sprayed in the walls and 12 inches of fiberglass insulation blown in the attic. Then a 5" thick concrete floor was poured inside the building and the inside liner panels were installed.

Top It Off
With Excellence!



Consider the advantages of metal roofing:

- Easy exposed fastened installation, open frame or solid deck
- Durable, weather-resistant, and virtually maintenance free
- A variety of colors, with matching trims and accessories
- Industry-leading 45-year paint warranty
- Heaviest galvanization in the industry
- Tested for wind, fire, and uplift

ms metal sales
manufacturing corporation

800.406.7387 • www.metalsales.us.com

QUALITY METAL ROOFING AND SIDING MATERIAL



Tyson and Kali Dicke

Tyson and Kali Dicke had a need for an insulated shop on their farm north of Goodhue. After some discussion and planning the Dicks decided to remodel an existing 50’x96’x13’ post frame building. To start the project all of the exterior wall and roof steel was removed. Then any damaged girts, purlins and grade boards were replaced. Next, windows and entry doors were framed in, and then framework was installed for a 15’ x 10’ overhead door on the east side and a 20’ x 12’ overhead door on the south end wall. Seven 3’x5’ insulated fixed light windows and a new steel service door from A.J. Mfg. were then installed. Tyson wanted a 5” thick concrete floor poured inside the entire building. The building was divided into a 50’ x 56’ insulated shop and a 50’ x 40’ storage area. The shop walls were insulated with one inch of closed cell spray foam insulation and then a 6” R-19 fiberglass batt. The ceiling has one inch of closed cell spray foam insulation and then 14 inches of blown fiberglass insulation making this a very energy efficient workspace! To complete the shop area, bright white Pro Panel II liner panels were installed on the walls and ceiling.



Rich Johnson

Rich Johnson hired the Lodemeier’s in 2019 to install a new roof on his 40’ x 60’ shop. Lodermeier’s crew first removed all the roof steel panels, ridge cap and rake trims. Then a 2’ eave overhang with vented soffit panels was added on one side of the roof. Once the new 29-gauge Charcoal gray roof panels were installed, two rows of snow retention rails were added.

Quality & Service
since 1927

CEMSTONE

**Residential • Commercial
& Agricultural Applications**

- Ready Mixed Concrete
- Sand & Gravel
- Concrete Placing Services

Ask about AG-CRETE®
Cemstone’s Concrete mix
specifically designed for
agricultural applications

SERVING - Cannon Falls • Hastings • Lake City
• Northfield • Red Wing, MN & River Falls, WI

651.388.8996 • 800.325.6055
cemstone.com

**Improve the appearance
of your next building...**

**Use AJ Manufacturing
Roll Formed Doors and
Aluminum Windows!**

Building Ideas
A.J. Manufacturing, Inc. • 1217 Oak Street • Bloomer, WI 54724
1-800-328-9448 • www.ajdoor.com

**•Implement
•Grain Equipment
•Buildings**

LODERMEIER’S

**lodermeiers.net
Goodhue, MN
651-923-4441**



McHattie Farms

Keith McHattie purchased this 64' x 152' x 18' post frame building from Lodermeier's this past year and had our crews erect it on his Hastings area farm. This building was divided into a 64' x 36' insulated shop area and a 64' x 116' machinery storage area. A large 30' x 18' split sliding door was installed on the south end wall to accommodate some of Keith's larger machinery. The two overhead doors are both 24' x 16' insulated doors with 3/4 h.p. operators. White and burgundy Pro Panel II steel panels from Metal Sales, Mfg. were used on the exterior walls and roof. There are four 4'x3' insulated slider windows and three steel service doors from A.J. Mfg. installed on this building. This building also had 2' vented eave and gable overhangs as well as 3'6" wainscot steel panels on the exterior. The shop area was insulated with 8" R-25 fiberglass batt insulation in the walls and 14 inches of blown fiberglass insulation in the attic. To complete the project, Bright white steel panels were installed on the interior shop walls and ceiling.



Mark and Karla Thermos

Mark Thermos stopped by the Lodermeier's offices in the spring of 2019 with an idea for a new building he wanted to build on his property north of Goodhue. After some planning and discussion Mark and Karla purchased the materials from Lodermeier's for this 40'x50'x14' post frame building, and with the help of family and friends erected it themselves. There are four 4'x3' insulated vinyl sliding windows and a steel service door from A.J. Mfg in this building. The insulated overhead doors are both 12'x12' and have operators with radio controls on them. Light stone and patriot red steel panels from Metal Sales Mfg. were the colors chosen for the siding and roofing. A sharp looking "eyebrow" type overhang was added on the NW corner to complete the project.



60 Ton - 165' height
36 Ton - 180' height
35 Ton - 160' height
32 Ton - 160' height
30 Ton - 160' height



CRANE SERVICE

with certified crane operators by NCCCO



- Implement
- Grain Equipment
- Buildings

lodermeiers.net
Goodhue, MN
651-923-4441



"Your Professional Concrete Supplier"

Give us a call and let our professionals help you with your project.

LOCATIONS TO SERVE YOU IN:

Zumbrota 732-5801	Dover 932-4020
Rochester 289-4022	Dodge Center 374-2565
Austin 437-8998	Stewartville 533-8809
Chatfield 932-4020	Builders Sand 288-3485

SPECIALIZING IN: Customer Service • Value Added Products • Concrete Pumping





Ryan Kelly
Ryan Kelly of Ellsworth, Wisconsin purchased a new Brock 30’ diameter x 9-ring bin with a capacity of 15,298 bushel. The bin has full floor aeration, Brock axial fan, Grain Saver 8” u-trough powersweep, and roof vents. Ryan also purchased a used SD250V grain dryer and installed it himself.



Ag Partners
The Bellechester facility of Ag Partners upgraded to a new Zimmerman Z6055 tower dryer. This dryer has stainless steel screens and automated PLC controls to name a few options. A new Schlager drag conveyor was also installed to move the dry corn to the dry corn leg, and a new 10,000 bph grain leg was installed to fill the dryer.

SCHLAGEL

EQUIPMENT THAT
REALLY MOVES

1.800.328.8002
www.schlager.com

MANUFACTURERS OF INNOVATIVE
MATERIAL HANDLING EQUIPMENT SINCE 1957

491 North Emerson Street
Cambridge MN 55008-1316 U.S.A.

Sales and
Service by:

•Implement
•Grain Equipment
•Buildings

LODERMEIER'S

lodermeiers.net
Goodhue, MN
651-923-4441

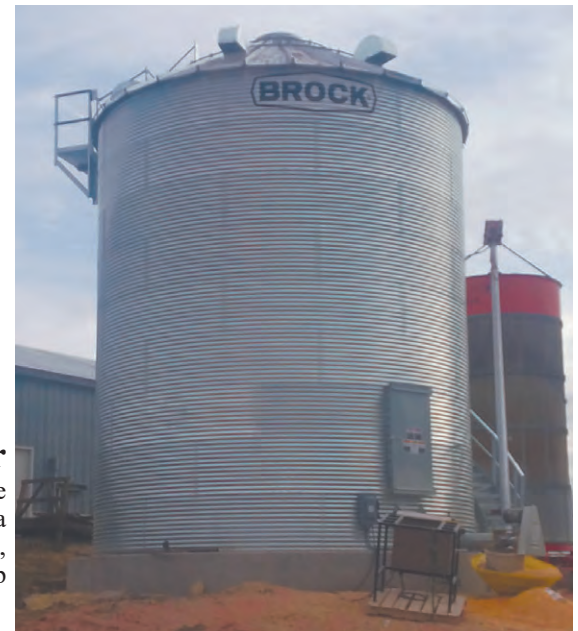


Alan Dicke

Alan Dicke of Goodhue purchased a new Brock bin from Lodermeier's. The Brock 24' diameter x 29' cove bin has a capacity of 11,562 bushels. This bin has full floor aeration, 6" unload, and quiet low speed centrifugal fan.

Josh Betcher

Josh Betcher of Mazeppa needed more wet storage, so he purchased a new Brock 21' diameter x 9-ring bin with a capacity of 7,216 bushels. The bin has an 8" Brock powersweep, Tri-Corr floor with Parthenon floor supports, and a Brock 3hp low speed centrifugal fan.



COMMERCIAL GRAIN BIN SWEEPS.

THE D150 IS A TRUE ZERO-ENTRY SWEEP AND IS AVAILABLE FOR GRAIN DEPTHS UP TO 150' AND WITH CAPACITIES UP TO 10,000 BPH

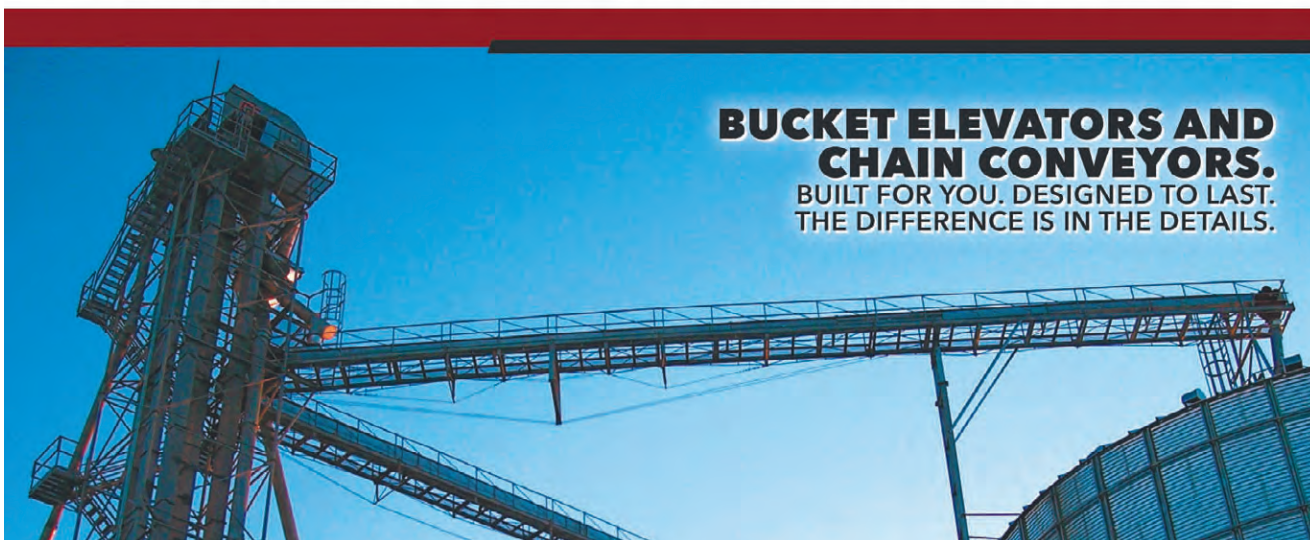
SINCE 1888
Sudenga
INDUSTRIES, INC.

WWW.SUDENGA.COM



GRAIN HANDLING SOLUTIONS

CONTACT LODERMEIER'S INC FOR ALL YOUR GRAIN HANDLING NEEDS, BIG OR SMALL.



BUCKET ELEVATORS AND CHAIN CONVEYORS.

BUILT FOR YOU. DESIGNED TO LAST. THE DIFFERENCE IS IN THE DETAILS.



LODERMEIER'S INC.
651-923-4441

38241 COUNTY 6 BLVD
GOODHUE, MN 55027

WWW.LODERMEIERS.NET

AN AUTHORIZED SUDENGA DEALER

WWW.GRAINSYSTEMS.COM

BUILT TO OUTLAST BUILT TO OUTPERFORM

ZIMMERMAN TOWER DRYERS

Not all tower dryers are created equal. What sets Zimmerman Tower Dryers apart from the competition is over 50 years of innovative design expertise and industry proven drying principles. The result is an easy-to-operate, easy-to-maintain, durable, fuel efficient grain dryer, supported by an expert dealer network that delivers peace of mind year after year.



UP TO FOUR ENTRY POINTS FOR
EASY CLEANOUT AND MAINTENANCE



TOUCHSCREEN PLC MAKES IT
EASY TO OPTIMIZE PERFORMANCE



GSI'S EXCLUSIVE PATENT PENDING
HEAT RECLAIMER AND PATENTED
GRAIN INVERTERS MAXIMIZE DRYING
EFFICIENCY AND GRAIN QUALITY



STORAGE + CONDITIONING + MATERIAL HANDLING + STRUCTURES

- Implement
- Grain Equipment
- Buildings

LODERMEIER'S

lodermeiers.net
Goodhue, MN
651-923-4441



Tom Goebel

Tom Goebel of Cottage Grove had Lodermeier's professional crews construct a new Brock 30' diameter x 48' cave bin with a capacity of 29,293 bushels, a Brock Tri-Corr floor with Parthenon floor supports and a low speed centrifugal fan to handle the aeration. The bin also has a 10" u-trough powersweep and Shur-Step stairway.



Tim Jennings

Tim farms in River Falls, Wisconsin and once again chose Lodermeier's to construct a new bin. Tim needed more wet storage space, so after some consideration a new Brock 24' diameter x 11-ring bin with a capacity of 11,588 bushels was constructed. The bin has full floor aeration, 8" Brock powersweep, and a low speed centrifugal fan.



Duane and Pat Stemann

Duane Stemann contacted Lodermeier’s in the summer of 2019 wanting to purchase a building materials package for a post frame building. Duane wanted to erect this building on an existing foundation that he had on his farm, so after a site visit and some measuring The Stemmanns purchased the materials for this 60’x82’x16’ post frame building and erected it themselves. There are 2’ eave overhangs on each side and three polycarbonate light panels on the back wall for letting in some natural light. The 22’x16’ split sliding door on the gable end will allow the building to be used for storing some of the Stemmanns larger farm equipment.



Bob and Geraldine Thumann

After heavy snows collapsed a building on the Thumann farm early in 2019 they contacted Lodermeier’s with a need for a new building. Once the details of the new building were worked out, construction began on this new 40’x64’x16’ post frame storage building on the Thumanns’ Zumbrota area farm. Some of the features on this building include 40’ engineered roof trusses from Littfin Truss Company that are spaced at 4’ o/c, an 18’ x 14’ overhead door with operator on the south end, a steel entry door and seamless steel rain gutters on both eaves.



The industry’s most comprehensive line of grain handling equipment ... since 1958.

- Portable Screw Conveyors
- Portable EnMasse Conveyors
- Farm & Commercial Unloading Systems
- Custom & U-Tough Augers
- Stationary EnMasse Conveyors
- Utility & Confinement Augers



LODERMEIER’S

lodermeiers.net
Goodhue, MN
651-923-4441

Wabasha Ready Mix

Precision Concrete Pumping & Placing

- Residential
- Agricultural
- Commercial



Wabasha Plant

905 Church Ave.
Wabasha, MN
651-565-3610

Durand Plant

Division of Wabasha
1848 County Road D, Durand, WI
715-283-4244

Hastings Plant

4 Corners Ready Mix
22100 Lillehei Ave., Hastings, MN
651-437-3445



Duane Kimmes

Duane Kimmes of Hastings purchased a new MC 10950 continuous flow tower dryer from Lodermeier’s. The dryer has aluminum outer screens, a sloped inner floor, stainless steel sweep floor, and three catwalks. The control system of the dryer consists of a Pinnacle 20/20 touchscreen control that can be monitored and run from anything with an internet access via the MC Trax. Automatic moisture control can be handled with the TruDry or AccuDry control systems.



Ferrier Farms

Tom and Tanner Ferrier from Dover decided they want to get a larger MC grain dryer. After careful consideration they chose to go with the largest ECO Series E700 dryer from MC. The dryer has aluminum outer screens, a very quiet centrifugal fan, Pinnacle 20/20 touchscreen controls with MC Trax, and AccuDry moisture controls. The Ferriers only have single-phase power, so the dryer is equipped with a VFD to convert the power from single-phase to three phase.



GRAIN DRYER SPECIALISTS
MathewsCompany.com



ECO SERIES



**GREAT VALUE
EFFICIENT
COMPACT**



**PINNACLE 20/20
CONTROL SYSTEM**



**MC Trax
Remote Control**



•Implement
•Grain Equipment
•Buildings
LODERMEIER'S

lodermeiers.net
Goodhue, MN
651-923-4441



Versatile. Durable. Dependable. Our tractors are in their element in every element.
Visit your local Massey Ferguson dealer today. **WE'LL QUIT WHEN YOU QUIT.**





Leinenweber Farms

Dave and LeRoy Leinenweber of St. James contacted the Lodermeier’s sales staff because they were interested in the New MC Delta mixed flow grain dryer. After talking to our staff and current owners of the Delta dryers they decided to go ahead and replace their four-year-old MC tower dryer. They liked the fact that there would be no screens to plug up on the dryer. The dryer has a Pinnacle 20/20 touchscreen control that can be remotely operated with the MC Trax system. Automatic moisture control is handled easily with the AccuDry moisture control system. Dave said he is very pleased with the dryer.



Mathews Company

GRAIN DRYER SPECIALISTS
MathewsCompany.com



DELTASERIES
with SmartFlow™ technology

MIXED-FLOW DRYERS

HIGHEST QUALITY GRAIN

MAINTAIN CAPACITY OVER TIME

ZERO  **SCREENS TO CLEAN**





MC Trax
Remote Control

PINNACLE 20/20
CONTROL SYSTEM